

Myc-Tag Monoclonal Antibody

catalog number: **E-AB-48024**

Note: Centrifuge before opening to ensure complete recovery of vial contents.

Description

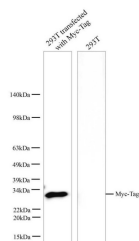
Reactivity	All
Immunogen	Synthetic peptide corresponding to Myc tag conjugated to keyhole limpet haemocyanin.
Host	Rabbit
Isotype	IgG
Clone	2G8
Purification	Protein A/G Purification
Buffer	PBS with 0.05% Proclin300, 1% protective protein and 50% glycerol, pH7.4

Applications

Recommended Dilution

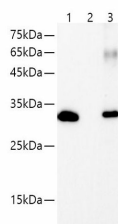
WB	1:2000-1:5000
IP	3µg/sample
IF	1:400-1:800

Data

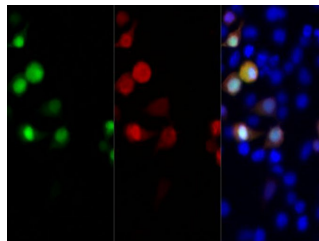


Western blot with Anti Myc-Tag Monoclonal Antibody at dilution of 1:2000. Lane 1:293T Ttransfected with Myc-Tag cell lysate,Lane 2:293T cell lysate.

Observed-MW:28 kDa
Calculated-MW:28 kDa



IP Result of 293F cells transfected with Myc-Tag fusion protein,using anti-Myc-Tag rabbit monoclonal antibody .
Lane 1:input, lane 2: rabbit IgG Isotype Control, Lane 3: anti-Myc-Tag rabbit monoclonal antibody



Immunofluorescent analysis of 293F cells transfected with Myc-Tag fusion protein, using anti-Myc-Tag rabbit monoclonal antibody at dilution of 1:200.

Preparation & Storage

Storage	Store at -20°C Valid for 12 months. Avoid freeze / thaw cycles.
Shipping	The product is shipped with ice pack, upon receipt, store it immediately at the temperature recommended.

Background

For Research Use Only

The MYC tag, derived from the c-MYC protein, is a popular epitope tag for detecting the expression of recombinant proteins in yeast, bacteria, insect, and mammalian cell systems. It can be used for affinity chromatography, then used to separate recombin

For Research Use Only

Toll-free: 1-888-852-8623
Web: www.elabscience.com

Tel: 1-832-243-6086
Email: techsupport@elabscience.com

Fax: 1-832-243-6017

Rev. V2.5