

## Recombinant FOXA1 Monoclonal Antibody

catalog number: **AN301525L**

**Note:** *Centrifuge before opening to ensure complete recovery of vial contents.*

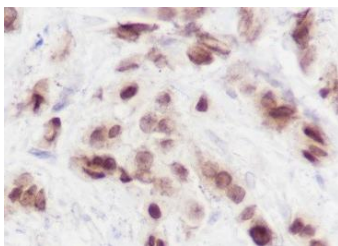
### Description

<b>Reactivity</b>	Human;
<b>Immunogen</b>	Recombinant human FOXA1 fragment
<b>Host</b>	Rabbit
<b>Isotype</b>	IgG, $\kappa$
<b>Clone</b>	A224
<b>Purification</b>	Protein A purified
<b>Buffer</b>	PBS, 50% glycerol, 0.05% Proclin 300, 0.05% protein protectant.

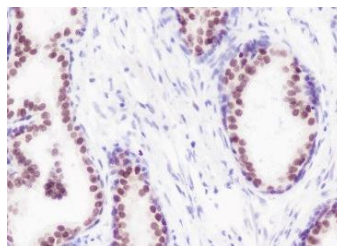
### Applications Recommended Dilution

<b>IHC</b>	1:200-1:1000
<b>IF</b>	1:50

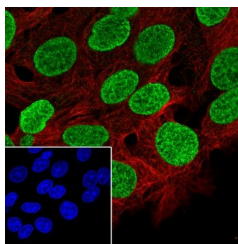
### Data



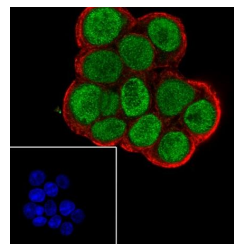
Immunohistochemistry of paraffin-embedded Human breast cancer using FOXA1 Monoclonal Antibody at dilution of 1: 1000.



Immunohistochemistry of paraffin-embedded Human prostate using FOXA1 Monoclonal Antibody at dilution of 1: 1000.



Immunofluorescent analysis of (100% Ice-cold methanol) fixed HepG2 cells using anti-FOXA1 Monoclonal Antibody at dilution of 1: 50.



Immunofluorescent analysis of (100% Ice-cold methanol) fixed MCF7 cells using anti-FOXA1 Monoclonal Antibody at dilution of 1: 50.

### Preparation & Storage

<b>Storage</b>	Store at -20°C Valid for 12 months. Avoid freeze / thaw cycles.
<b>Shipping</b>	Ice bag

### Background

Transcription factor that is involved in embryonic development, establishment of tissue-specific gene expression and regulation of gene expression in differentiated tissues.

### For Research Use Only