

Elab Bright™ Violet 650 Anti-Human CD3 Antibody[UCHT1]

Catalog Number: E-AB-F1230U

Note: Centrifuge before opening to ensure complete recovery of vial contents.

Description

| | |
|-------------------------|--|
| Reactivity | Human |
| Host | Mouse |
| Isotype | Mouse IgG1, κ |
| Clone No. | UCHT1 |
| Isotype Control | Elab Bright™ Violet 650 Mouse IgG1, κ Isotype Control[X40] [Product AN00823U] |
| Conjugation | Elab Bright™ Violet 650 |
| Conjugation Information | Elab Bright Violet 650 is designed to be excited by the violet laser (405 nm) and detected using an optical filter centered near 650 nm (e.g., a 660/20 nm bandpass filter). |
| Storage Buffer | Phosphate buffered solution, pH 7.2, containing 0.09% stabilizer and 1% protein protectant. |

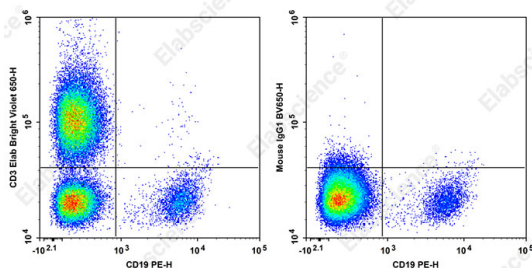
Applications

Recommended usage

FCM

Each lot of this antibody is quality control tested by flow cytometric analysis. **The amount of the reagent is suggested to be used 5 μL of antibody per test (million cells in 100 μL staining volume or per 100 μL of whole blood).** Please check your vial before the experiment. Since applications vary, the appropriate dilutions must be determined for individual use.

Data



Staining of normal human peripheral blood cells with PE Anti-Human CD19 Antibody and Elab Bright Violet 650 Mouse Anti-Human CD3 Antibody[UCHT1] (left) or Elab Bright Violet 650 Mouse IgG1, κ Isotype Control (right). Cells in the lymphocytes gate were used for analysis.

Preparation & Storage

| | |
|----------|---|
| Storage | Keep as concentrated solution. This product can be stored at 2-8°C for 12 months. Please protected from prolonged exposure to light and do not freeze. |
| Shipping | Ice bag |

Antigen Information

| | |
|-----------------|---|
| Alternate Names | CD3E;CD3e;T-cell surface antigen T3/Leu-4 epsilon chain;T-cell surface glycoprotein CD3 epsilon chain;T3E |
|-----------------|---|

For Research Use Only

Uniprot ID

P07766

Gene ID

915

Background

CD3ε is a 20 kD chain of the CD3/T cell receptor (TCR) complex, which is composed of two CD3ε, one CD3γ, one CD3δ, one CD3ζ (CD247), and a T cell receptor (α/β or γ/δ) heterodimer. It is found on all mature T lymphocytes, NK T cells, and some thymocytes.

CD3, also known as T3, is a member of the immunoglobulin superfamily that plays a role in antigen recognition, signal transduction, and T cell activation.