

Recombinant Human LAMP1/CD107a Protein (Fc Tag)



Catalog Number:PKSH032683

Note: Centrifuge before opening to ensure complete recovery of vial contents.

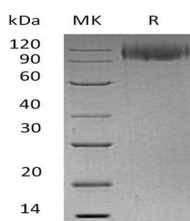
Description

Synonyms	Lysosome-Associated Membrane Glycoprotein 1;LAMP-1;Lysosome-Associated Membrane Protein 1;CD107 Antigen-Like Family Member A;CD107a;LAMP1;CD107a;LAMPa;LGP120
Species	Human
Expression Host	HEK293 Cells
Sequence	Ala29-Met382
Accession	P11279
Calculated Molecular Weight	65.5 kDa
Observed molecular weight	90-130 kDa
Tag	C-Fc

Properties

Purity	> 95 % as determined by reducing SDS-PAGE.
Endotoxin	< 1.0 EU per µg of the protein as determined by the LAL method.
Storage	Generally, lyophilized proteins are stable for up to 12 months when stored at -20 to -80°C. Reconstituted protein solution can be stored at 4-8°C for 2-7 days. Aliquots of reconstituted samples are stable at < -20°C for 3 months.
Shipping	This product is provided as lyophilized powder which is shipped with ice packs.
Formulation	Lyophilized from a 0.2 µm filtered solution of PBS, pH 7.4. Normally 5 % - 8 % trehalose, mannitol and 0.01% Tween80 are added as protectants before lyophilization. Please refer to the specific buffer information in the printed manual.
Reconstitution	Please refer to the printed manual for detailed information.

Data



> 95 % as determined by reducing SDS-PAGE.

Background

Lysosome-Associated Membrane Glycoprotein 1 (LAMP1) is a single-pass type I membrane protein belonging to the LAMP family. LAMP1 is expressed largely in the endosome-lysosome membranes of cells. It shuttles between lysosomes; endosomes; and the plasma membrane. LAMP1 functions to present carbohydrate ligands to selectins and it has also been implicated in tumor cell metastasis. It has been proposed LAMP1 can be used as a therapeutic agent for certain cancers; as well as a marker for lysosomal storage disorders and degranulation on lymphocytes such as CD8+ and NK cells. Cell surface LAMP1 and LAMP2 have been shown to promote adhesion of human peripheral blood mononuclear

For Research Use Only

A Reliable Research Partner in Life Science and Medicine

Toll-free: 1-888-852-8623

Web: www.elabscience.com

Tel: 1-832-243-6086

Email: techsupport@elabscience.com

Fax: 1-832-243-6017

Recombinant Human LAMP1/CD107a Protein (Fc Tag)

Catalog Number: PKSH032683

DIA • AN®
by Elabscience

cells(PBMC) to vascular endothelium; therefore they are possibly involved in the adhesion of PBMCs to the site of inflammation.

For Research Use Only

A Reliable Research Partner in Life Science and Medicine

Toll-free: 1-888-852-8623

Web: www.elabscience.com

Tel: 1-832-243-6086

Email: techsupport@elabscience.com

Fax: 1-832-243-6017