

Recombinant Mouse TIM1/HAVCR1 Protein (His Tag)

Catalog Number: PKSM041333

Note: Centrifuge before opening to ensure complete recovery of vial contents.

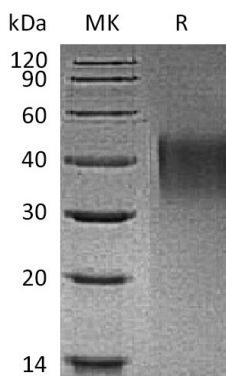
Description

| | |
|----------------------|---|
| Species | Mouse |
| Source | HEK293 Cells-derived Mouse TIM1/HAVCR1 protein Tyr22-Thr212, with an C-terminal His |
| Calculated MW | 21.8 kDa |
| Observed MW | 35-50 kDa |
| Accession | Q5QNS5 |
| Bio-activity | Not validated for activity |

Properties

| | |
|-----------------------|---|
| Purity | > 95 % as determined by reducing SDS-PAGE. |
| Endotoxin | < 1.0 EU per µg of the protein as determined by the LAL method. |
| Storage | Generally, lyophilized proteins are stable for up to 12 months when stored at -20 to -80°C. Reconstituted protein solution can be stored at 4-8°C for 2-7 days. Aliquots of reconstituted samples are stable at < -20°C for 3 months. |
| Shipping | This product is provided as lyophilized powder which is shipped with ice packs. |
| Formulation | Lyophilized from a 0.2 µm filtered solution of PBS, pH 7.4. Normally 5% - 8% trehalose, mannitol and 0.01% Tween 80 are added as protectants before lyophilization. |
| | Please refer to the specific buffer information in the printed manual. |
| Reconstitution | Please refer to the printed manual for detailed information. |

Data



Background

TIM-1/KIM-1/HAVCR belongs to the immunoglobulin superfamily that consists 305 amino acid (aa). It is expressed by stimulated T-cells. TIM-1/KIM-1/HAVCR may play a role in T-helper cell development and the regulation of asthma and allergic diseases. Receptor for TIMD4. And may have a role in kidney injury and repair. Belongs to the T-cell and airway phenotype regulator (Tapr) locus, a single chromosomal region that confers reduced T-helper type 2 responsiveness and protects against airway hyperactivity (AHR), the hallmark of human asthma.

For Research Use Only

Toll-free: 1-888-852-8623
Web: www.elabscience.com

Tel: 1-832-243-6086
Email: techsupport@elabscience.com

Fax: 1-832-243-6017