

# Elab Fluor<sup>®</sup> 647-conjugated beta Tubulin Monoclonal Antibody

catalog number: AN00293M



**Note:** Centrifuge before opening to ensure complete recovery of vial contents.

## Description

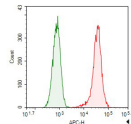
<b>Reactivity</b>	Human
<b>Immunogen</b>	Recombinant human TUBB protein by E. Coli
<b>Host</b>	Mouse
<b>Isotype</b>	IgG
<b>Clone</b>	2E8-2
<b>Purification</b>	Protein A/G Purification
<b>Conjugation</b>	Elab Fluor <sup>®</sup> 647(Ex/Em:650nm/665nm)
<b>buffer</b>	PBS with 0.05% proclin 300, 1% protective protein and 50% glycerol,pH7.4

## Applications

## Recommended Dilution

<b>FCM</b>	0.2 µg per 10 <sup>6</sup> cells in a 100 µL suspension
------------	---------------------------------------------------------

## Data



1X10<sup>6</sup> HeLa cells were intracellularly stained with 0.2 µg

Elab Fluor<sup>®</sup> 647-conjugated beta Tubulin Monoclonal Antibody (red), or 0.2 µg Elab Fluor<sup>®</sup> 647-conjugated beta Tubulin Monoclonal Antibody Isotype Control (green).

## Preparation & Storage

<b>Storage</b>	Store at -20°C Valid for 12 months. Avoid freeze / thaw cycles. Protected from prolonged exposure to light.
<b>Shipping</b>	The product is shipped with ice pack,upon receipt,store it immediately at the temperature recommended.

## Background

In eukaryotes there are six members of the tubulin superfamily.  $\alpha$ - and  $\beta$ -tubulins polymerize into microtubules,a major component of the eukaryotic cytoskeleton. Microtubules function in many essential cellular processes,including mitosis. Both  $\alpha$  and  $\beta$  tubulins have a mass of around 50 kDa. Tubulin was long thought to be specific to eukaryotes. Beta-tubulin gene is commonly used as a loading control for western blot.

## For Research Use Only

A Reliable Research Partner in Life Science and Medicine  
Tel: 400-999-2100

Email:[techsupport@elabscience.cn](mailto:techsupport@elabscience.cn)

Web:[www.elabscience.cn](http://www.elabscience.cn)

Rev. V1.7