

LDHD Polyclonal Antibody

catalog number: E-AB-52194

Note: Centrifuge before opening to ensure complete recovery of vial contents.

Description

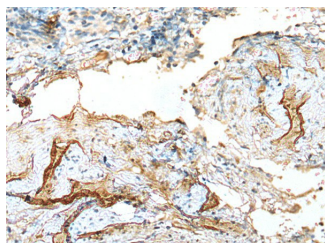
Reactivity	Human
Immunogen	Fusion protein of human LDHD
Host	Rabbit
Isotype	IgG
Purification	Antigen affinity purification
Conjugation	Unconjugated
buffer	Phosphate buffered solution, pH 7.4, containing 0.05% stabilizer and 50% glycerol.

Applications

Recommended Dilution

IHC	1:50-1:350
------------	------------

Data



Immunohistochemistry of paraffin-embedded Human cervical cancer tissue using LDHD Polyclonal Antibody at dilution of 1:120($\times 200$)

Preparation & Storage

Storage	Store at -20°C Valid for 12 months. Avoid freeze / thaw cycles.
Shipping	The product is shipped with ice pack, upon receipt, store it immediately at the temperature recommended.

Background

LDHD belongs to the D-isomer specific 2-hydroxyacid dehydrogenase family. D-lactate and D-glycerate dehydrogenase activities have been found in a similar protein in yeast. Alternative splicing occurs at this locus and two transcript variants encoding distinct isoforms have been identified.

For Research Use Only