

## CEP112 Polyclonal Antibody

**catalog number: E-AB-90791**

**Note:** Centrifuge before opening to ensure complete recovery of vial contents.

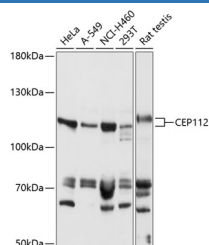
### Description

<b>Reactivity</b>	Human;Rat
<b>Immunogen</b>	Recombinant fusion protein of human CEP112
<b>Host</b>	Rabbit
<b>Isotype</b>	IgG
<b>Purification</b>	Affinity purification
<b>Buffer</b>	Phosphate buffered solution, pH 7.4, containing 0.05% stabilizer and 50% glycerol.

### Applications Recommended Dilution

<b>WB</b>	1:500-1:2000
-----------	--------------

### Data



Western blot analysis of extracts of various cell lines using CEP112 Polyclonal Antibody at 1:1000 dilution.

**Observed-MV:113 kDa**

**Calculated-MV:24 kDa/112 kDa**

### Preparation & Storage

<b>Storage</b>	Store at -20°C Valid for 12 months. Avoid freeze / thaw cycles.
<b>Shipping</b>	The product is shipped with ice pack, upon receipt, store it immediately at the temperature recommended.

### Background

This gene encodes a coiled-coil domain containing protein that belongs to the cell division control protein 42 effector protein family. In neurons, it localizes to the cytoplasm of dendrites and is also enriched in the nucleus where it interacts with the RNA polymerase III transcriptional repressor Maf1 to regulate gamma-aminobutyric acid A receptor surface expression. In addition, the protein has been identified as a component of the human centrosome. Alternative splicing results in multiple transcript variants.

### For Research Use Only