

ZG16 Polyclonal Antibody

catalog number: E-AB-53054

Note: Centrifuge before opening to ensure complete recovery of vial contents.

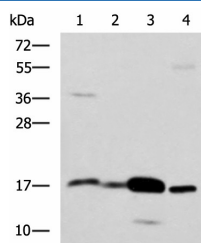
Description

Reactivity	Human;Mouse
Immunogen	Fusion protein of human ZG16
Host	Rabbit
Isotype	IgG
Purification	Antigen affinity purification
Buffer	Phosphate buffered solution, pH 7.4, containing 0.05% stabilizer and 50% glycerol.

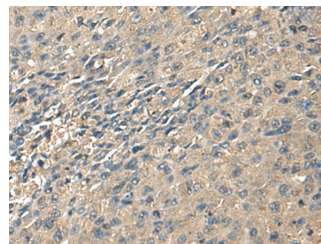
Applications Recommended Dilution

WB	1:1000-1:5000
IHC	1:100-1:300

Data



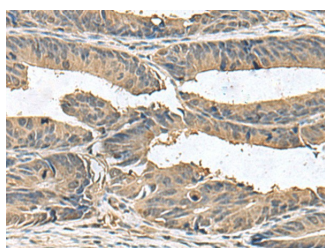
Western blot analysis of Mouse Pancreas tissue Mouse small intestines tissue Mouse large intestine tissue Human sigmoid tissue lysates using ZG16 Polyclonal Antibody at dilution of 1:1350



Immunohistochemistry of paraffin-embedded Human liver cancer tissue using ZG16 Polyclonal Antibody at dilution of 1:95(×200)

Observed-MW:Refer to figures

Calculated-MW:18 kDa



Immunohistochemistry of paraffin-embedded Human colorectal cancer tissue using ZG16 Polyclonal Antibody at dilution of 1:95(×200)

Preparation & Storage

Storage	Store at -20°C Valid for 12 months. Avoid freeze / thaw cycles.
Shipping	The product is shipped with ice pack,upon receipt,store it immediately at the temperature recommended.

Background

For Research Use Only

May play a role in protein trafficking. May act as a linker molecule between the submembranous matrix on the luminal side of zymogen granule membrane (ZGM) and aggregated secretory proteins during granule formation in the TGN.

For Research Use Only

Toll-free: 1-888-852-8623
Web: www.elabscience.com

Tel: 1-832-243-6086
Email: techsupport@elabscience.com

Fax: 1-832-243-6017

Rev. V1.7