

GPR182 Polyclonal Antibody

Catalog Number:E-AB-16259



Note: Centrifuge before opening to ensure complete recovery of vial contents.

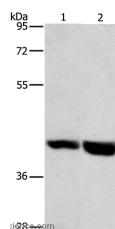
Description

Reactivity	Human,Mouse
Immunogen	Synthetic peptide of human GPR182
Host	Rabbit
Isotype	IgG
Purification	Affinity purification
Conjugation	Unconjugated
Formulation	PBS with 0.05% sodium azide and 50% glycerol, PH7.4

Applications Recommended Dilution

WB	1:500-1:2000
-----------	--------------

Data



Western Blot analysis of Mouse heart and liver tissue
using GPR182 Polyclonal Antibody at dilution of

1:1000

Calculated Mw:45kDa

Preparation & Storage

Storage Store at -20°C. Avoid freeze / thaw cycles.

Background

Adrenomedullin is a potent vasodilator peptide that exerts major effects on cardiovascular function. This gene encodes a seven-transmembrane protein that belongs to the family 1 of G-protein coupled receptors. Studies of the rat counterpart suggest that the encoded protein may function as a receptor for adrenomedullin.

For Research Use Only

A Reliable Research Partner in Life Science and Medicine

Toll-free: 1-888-852-8623

Web: www.elabscience.com

Tel: 1-832-243-6086

Email: techsupport@elabscience.com

Fax: 1-832-243-6017