

## Recombinant Human Ephrin-B1/EFNB1 Protein (His Tag)

Catalog Number: PKSH032394

**Note:** Centrifuge before opening to ensure complete recovery of vial contents.

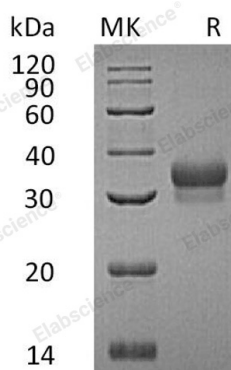
### Description

<b>Species</b>	Human
<b>Source</b>	HEK293 Cells-derived Human Ephrin-B1;EFNB1 protein Leu28-Gly232, with an C-terminal His
<b>Calculated MW</b>	23.4 kDa
<b>Observed MW</b>	28-34 kDa
<b>Accession</b>	P98172
<b>Bio-activity</b>	Not validated for activity

### Properties

<b>Purity</b>	> 95 % as determined by reducing SDS-PAGE.
<b>Endotoxin</b>	< 1.0 EU per µg of the protein as determined by the LAL method.
<b>Storage</b>	Generally, lyophilized proteins are stable for up to 12 months when stored at -20 to -80°C. Reconstituted protein solution can be stored at 4-8°C for 2-7 days. Aliquots of reconstituted samples are stable at < -20°C for 3 months.
<b>Shipping</b>	This product is provided as lyophilized powder which is shipped with ice packs.
<b>Formulation</b>	Lyophilized from a 0.2 µm filtered solution of 20mM PB, 150mM NaCl, pH7.4. Normally 5% - 8% trehalose, mannitol and 0.01% Tween 80 are added as protectants before lyophilization.
<b>Reconstitution</b>	Please refer to the specific buffer information in the printed manual.

### Data



> 95 % as determined by reducing SDS-PAGE.

### Background

Ephrin-B1, also named EFL-3, ELK ligand, EPH-related receptor tyrosine kinase ligand 2, is a single-pass type I membrane protein. It contains 1 ephrin RBD (ephrin receptor-binding) domain and belongs to the ephrin family. Ephrins are divided into the ephrin-A (EFNA) class, which are anchored to the membrane by a glycosylphosphatidylinositol linkage, and the ephrin-B (EFNB) class, which are transmembrane proteins. All ephrins share a conserved extracellular sequence, which most likely corresponds to the receptor-binding domain. Ephrin-B1 has been shown to bind EphA3, EphB1, EphB2, EphB3, and EphB4. The extracellular domains of human and mouse ephrin-B1 share 94% amino acid identity.

### For Research Use Only