

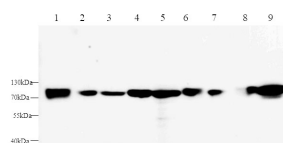
AFP Polyclonal Antibody

catalog number: E-AB-40293

Note: Centrifuge before opening to ensure complete recovery of vial contents.

Description	
Reactivity	Human;Mouse;Rat
Immunogen	Recombinant Mouse Afp protein expressed by E.coli
Host	Rabbit
Isotype	IgG
Purification	Antigen Affinity Purification
Conjugation	Unconjugated
Buffer	PBS with 0.05% Proclin300, 1% protective protein and 50% glycerol, pH7.4
Applications	Recommended Dilution
WB	1:500-1:1000
IHC	1:200-1:500
IF	1:100-1:200

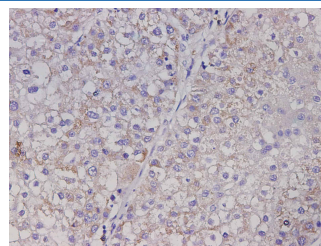
Data



Western blot with Afp Polyclonal antibody at dilution of 1:1000. lane 1: Hep G2 whole cell lysate, lane 2: Mouse placenta, lane 3: Rat placenta, lane 4: Mouse Fetal liver, lane 5: Rat Fetal liver, lane 6: Mouse liver, lane 7: Mouse kidney, lane 8: Rat liver, lane 9: Rat kidney

Observed-MW: 73 kDa

Calculated-MW: 67 kDa



Immunohistochemistry of paraffin-embedded Mouse liver using AFP Polyclonal Antibody at dilution of 1:50

Preparation & Storage	
Storage	Store at -20°C Valid for 12 months. Avoid freeze / thaw cycles.
Shipping	The product is shipped with ice pack, upon receipt, store it immediately at the temperature recommended.

Background

This gene encodes alpha-fetoprotein, a major plasma protein produced by the yolk sac and the liver during fetal life. Alpha-fetoprotein expression in adults is often associated with hepatoma or teratoma. However, hereditary persistence of alpha-fetoprotein may also be found in individuals with no obvious pathology. The protein is thought to be the fetal counterpart of serum albumin, and the alpha-fetoprotein and albumin genes are present in tandem in the same transcriptional orientation on chromosome 4. Alpha-fetoprotein is found in monomeric as well as dimeric and trimeric forms, and binds copper, nickel, fatty acids and bilirubin. The level of alpha-fetoprotein in amniotic fluid is used to measure renal loss of protein to screen for spina bifida and anencephaly.

For Research Use Only