

14-3-3 theta Polyclonal Antibody

catalog number: E-AB-12588

Note: Centrifuge before opening to ensure complete recovery of vial contents.

Description

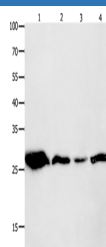
Reactivity	Human;Mouse;Rat
Immunogen	Synthetic peptide of human YWHAQ
Host	Rabbit
Isotype	IgG
Purification	Affinity purification
Conjugation	Unconjugated
buffer	Phosphate buffered solution, pH 7.4, containing 0.05% stabilizer and 50% glycerol.

Applications

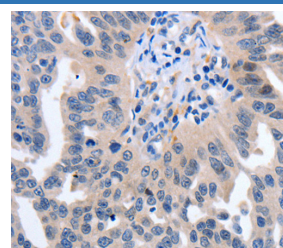
Recommended Dilution

WB	1:1000-1:5000
IHC	1:25-1:100

Data

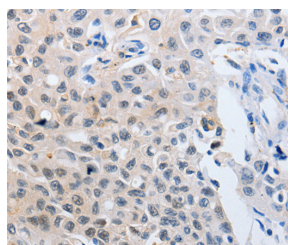


Western Blot analysis of Mouse brain tissue, A549 cell and Human lymphoma tissue, hela cell using 14-3-3 theta Polyclonal Antibody at dilution of 1:950



Immunohistochemistry of paraffin-embedded Human ovarian cancer using 14-3-3 theta Polyclonal Antibody at dilution of 1:50

Calculated-MV:28 kDa



Immunohistochemistry of paraffin-embedded Human lung cancer using 14-3-3 theta Polyclonal Antibody at dilution of 1:50

Preparation & Storage

Storage	Store at -20°C Valid for 12 months. Avoid freeze / thaw cycles.
Shipping	The product is shipped with ice pack, upon receipt, store it immediately at the temperature recommended.

Background

This gene product belongs to the 14-3-3 family of proteins which mediate signal transduction by binding to phosphoserine-containing proteins. This highly conserved protein family is found in both plants and mammals, and this protein is 99% identical to the mouse and rat orthologs. This gene is upregulated in patients with amyotrophic lateral sclerosis. It contains in its 5' UTR a 6 bp tandem repeat sequence which is polymorphic, however, there is no correlation between the repeat number and the disease.

For Research Use Only