

# Recombinant chicken IGF1/IGF?/IGF-1 protein (His tag)<sup>dg</sup>

Catalog Number:PDEO100008

**DIA • AN**<sup>®</sup>  
by Elabscience

**Note:** Centrifuge before opening to ensure complete recovery of vial contents.

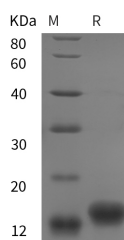
## Description

<b>Synonyms</b>	Insulin-like growth factor I;IGF1;
<b>Species</b>	Chicken
<b>Expression Host</b>	E.coli
<b>Sequence</b>	Gly 49-Met 153
<b>Accession</b>	P18254
<b>Calculated Molecular Weight</b>	11.4 kDa
<b>Observed molecular weight</b>	13 kDa
<b>Tag</b>	N-His

## Properties

<b>Purity</b>	> 95 % as determined by reducing SDS-PAGE.
<b>Endotoxin</b>	Please contact us for more information.
<b>Storage</b>	Generally, lyophilized proteins are stable for up to 12 months when stored at -20 to -80°C. Reconstituted protein solution can be stored at 4-8°C for 2-7 days. Aliquots of reconstituted samples are stable at < -20°C for 3 months.
<b>Shipping</b>	This product is provided as lyophilized powder which is shipped with ice packs.
<b>Formulation</b>	Lyophilized from sterile PBS, pH 7.4. Normally 5 % - 8 % trehalose, mannitol and 0.01 % Tween80 are added as protectants before lyophilization. Please refer to the specific buffer information in the printed manual.
<b>Reconstitution</b>	Please refer to the printed manual for detailed information.

## Data



> 95 % as determined by reducing SDS-PAGE.

## Background

Insulin-like growth factor I (IGF-I or IGF-1), also known as somatomedin C, is the dominant effector of growth hormone and is structurally homologous to proinsulin. IGF-I induces the proliferation, migration, and differentiation of a wide variety of cell types during development and postnatally. IGF-I regulates glucose and fatty acid metabolism, steroid hormone activity, and cartilage and bone metabolism. It plays an important role in muscle regeneration and tumor progression. IGF-I/IGF-1 binds IGF-I R, IGF-II R, and the insulin receptor, although its effects are mediated primarily by IGF-I R. The IGF-I protein associates with IGF binding proteins thereby increasing its plasma half-life and modulating its interactions with receptors.

## For Research Use Only

A Reliable Research Partner in Life Science and Medicine

Toll-free: 1-888-852-8623

Web: [www.elabscience.com](http://www.elabscience.com)

Tel: 1-832-243-6086

Email: [techsupport@elabscience.com](mailto:techsupport@elabscience.com)

Fax: 1-832-243-6017