

## LDLR Polyclonal Antibody

**catalog number: E-AB-70239**

**Note:** Centrifuge before opening to ensure complete recovery of vial contents.

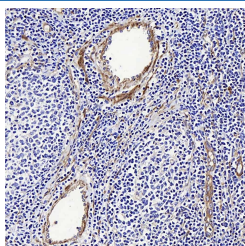
### Description

<b>Reactivity</b>	Human;Mouse;Rat
<b>Immunogen</b>	KLH conjugated Synthetic peptide corresponding to LDL Receptor
<b>Host</b>	Rabbit
<b>Isotype</b>	IgG
<b>Purification</b>	Affinity purification
<b>Buffer</b>	Phosphate buffered solution, pH 7.4, containing 0.05% stabilizer, 1% protein protectant and 50% glycerol.

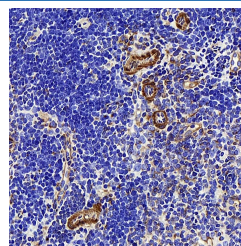
### Applications

Applications	Recommended Dilution
IHC	1:200-1:1000

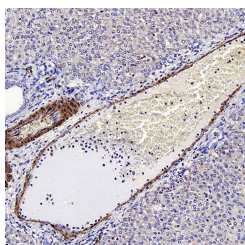
### Data



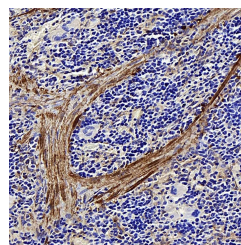
Immunohistochemistry analysis of paraffin-embedded human Lymphoma using LDLR Polyclonal Antibody at dilution of 1:300.



Immunohistochemistry analysis of paraffin-embedded mouse thymus using LDLR Polyclonal Antibody at dilution of 1:300.



Immunohistochemistry analysis of paraffin-embedded rat liver using LDLR Polyclonal Antibody at dilution of 1:300.



Immunohistochemistry analysis of paraffin-embedded rat spleen using LDLR Polyclonal Antibody at dilution of 1:300.

### Preparation & Storage

<b>Storage</b>	Store at -20°C Valid for 12 months. Avoid freeze / thaw cycles.
<b>Shipping</b>	The product is shipped with ice pack, upon receipt, store it immediately at the temperature recommended.

### Background

LDLR (low density lipoprotein receptor) is a member of the LDL receptor gene family and is involved in receptor-mediated endocytosis of specific ligands. The LDLR is a cell surface glycoprotein that scavenges LDL from the blood and regulates plasma LDL cholesterol. The cytoplasmic domain of the LDL receptor is necessary for the receptor to cluster in coated pits, which promotes the rapid endocytosis of bound LDL. The protein is highly glycosylated through N- and O-linkages and thus migrates at 100 to 160 kDa bands on SDS-PAGE.

### For Research Use Only