

# MBL2/MBP-C Polyclonal Antibody

catalog number: D-AB-10438L



**Note:** Centrifuge before opening to ensure complete recovery of vial contents.

## Description

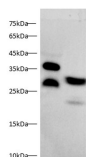
<b>Reactivity</b>	Human;Mouse;Rat
<b>Immunogen</b>	Recombinant Human MBL2/MBP-C protein expressed by E.coli
<b>Host</b>	Rabbit
<b>Isotype</b>	IgG
<b>Purification</b>	Antigen Affinity Purification
<b>Conjugation</b>	Unconjugated
<b>buffer</b>	PBS with 0.05% proclin 300, 1% protective protein and 50% glycerol,pH7.4

## Applications

## Recommended Dilution

<b>WB</b>	1:500-1:1000
-----------	--------------

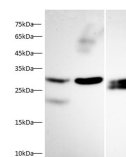
## Data



Western blot with MBL2/MBP-C Polyclonal antibody at dilution of 1:1000.lane 1:Human plasma,lane 2:HepG2 whole cell lysate

**Observed-MV:26 kDa**

**Calculated-MV:26 kDa**



Western blot with MBL2/MBP-C Polyclonal antibody at dilution of 1:1000.lane 1:Mouse liver,lane 2:Mouse kidney,lane 3:Rat kidney

**Observed-MV:26 kDa**

**Calculated-MV:26 kDa**

## Preparation & Storage

<b>Storage</b>	Store at -20°C Valid for 12 months. Avoid freeze / thaw cycles.
<b>Shipping</b>	The product is shipped with ice pack,upon receipt,store it immediately at the temperature recommended.

## Background

Mannose-binding Lectin (MBL) is an acute phase protein bearing to the family of collectins produced by the liver as a monomer that forms a triple helix. Once released in serum,it further polymerizes forming dimers to octamers. The degree of serum polymerization is critical for the biological activity of MBL. MBL has higher affinity to microbial polysaccharides or their glycoconjugates. MBL was shown earlier to bind cell surfaces of bacteria,fungi,protozoa and viruses and acts as an acute-phase plasma protein (APP) during infection and inflammation. MBL activates the lectin-complement pathway,promotes opsonophagocytosis and modulates inflammation.

## For Research Use Only

A Reliable Research Partner in Life Science and Medicine  
Tel: 400-999-2100

Email:[techsupport@elabscience.cn](mailto:techsupport@elabscience.cn)

Web:[www.elabscience.cn](http://www.elabscience.cn)

Rev. V1.8