

## CD20 Polyclonal Antibody

**catalog number: D-AB-10179L**

**Note:** Centrifuge before opening to ensure complete recovery of vial contents.

### Description

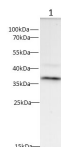
<b>Reactivity</b>	Mouse;Rat
<b>Immunogen</b>	Recombinant Mouse CD20 protein expressed by E.coli
<b>Host</b>	Rabbit
<b>Isotype</b>	IgG
<b>Purification</b>	Antigen Affinity Purification
<b>Buffer</b>	PBS with 0.05% Proclin300, 1% protective protein and 50% glycerol, pH7.4

### Applications

### Recommended Dilution

<b>WB</b>	1:500-1:1000
-----------	--------------

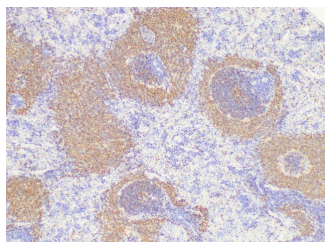
### Data



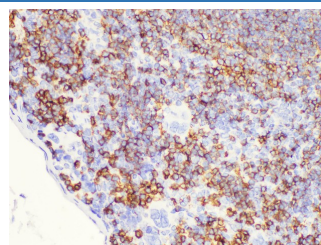
Western blot with CD20 Polyclonal antibody at dilution of 1:500.lane 1:Rat spleen

**Observed-MW:37 kDa**

**Calculated-MW:32 kDa**



Immunohistochemistry of paraffin-embedded Rat spleen using CD20 Polyclonal Antibody at dilution of 1:100



Immunohistochemistry of paraffin-embedded Mouse spleen using CD20 Polyclonal Antibody at dilution of 1:100

### Preparation & Storage

<b>Storage</b>	Store at -20°C Valid for 12 months. Avoid freeze / thaw cycles.
<b>Shipping</b>	The product is shipped with ice pack,upon receipt,store it immediately at the temperature recommended.

### Background

CD20 is a 33-37 kDa transmembrane phosphoprotein. CD20 is a B-lymphocyte surface molecule that is widely expressed during B-cell ontogeny,from early pre-B-cell developmental stages until final differentiation into plasma cells. CD20 functions as calcium-permeable cation channel. It is involved in the regulation of B-cell activation and proliferation. CD20 serves as a useful target for antibody-mediated therapeutic depletion of B-cells.

### For Research Use Only