

JDP2 Polyclonal Antibody

catalog number: E-AB-18141

Note: Centrifuge before opening to ensure complete recovery of vial contents.

Description

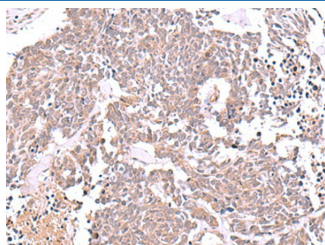
| | |
|---------------------|--|
| Reactivity | Human;Mouse;Rat |
| Immunogen | Synthetic peptide of human JDP2 |
| Host | Rabbit |
| Isotype | IgG |
| Purification | Antigen affinity purification |
| Conjugation | Unconjugated |
| Buffer | Phosphate buffered solution, pH 7.4, containing 0.05% stabilizer and 50% glycerol. |

Applications

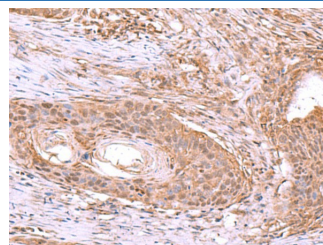
Recommended Dilution

| | |
|------------|------------|
| IHC | 1:40-1:200 |
|------------|------------|

Data



Immunohistochemistry of paraffin-embedded Human lung cancer tissue using JDP2 Polyclonal Antibody at dilution of 1:40(×200)



Immunohistochemistry of paraffin-embedded Human esophagus cancer tissue using JDP2 Polyclonal Antibody at dilution of 1:40(×200)

Preparation & Storage

| | |
|-----------------|--|
| Storage | Store at -20°C Valid for 12 months. Avoid freeze / thaw cycles. |
| Shipping | The product is shipped with ice pack, upon receipt, store it immediately at the temperature recommended. |

Background

JDP2 (Jun Dimerization Protein 2) is a Protein Coding gene. Diseases associated with JDP2 include Keratitis and Skeletal Muscle Cancer. Among its related pathways are Tacrolimus/Cyclosporine Pathway, Pharmacodynamics and ATF-2 transcription factor network. GO annotations related to this gene include transcription factor activity, sequence-specific DNA binding and protein heterodimerization activity. An important paralog of this gene is ATF3.