

δ-Catenin/p120 Catenin Polyclonal Antibody

catalog number: E-AB-92353

Note: Centrifuge before opening to ensure complete recovery of vial contents.

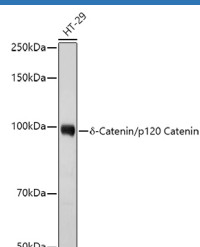
Description

Reactivity	Human
Immunogen	Recombinant fusion protein of human δ-Catenin/p120 Catenin
Host	Rabbit
Isotype	IgG
Purification	Affinity purification
Buffer	Phosphate buffered solution, pH 7.4, containing 0.05% stabilizer and 50% glycerol.

Applications Recommended Dilution

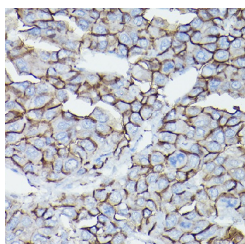
WB	1:500-1:2000
IHC	1:50-1:200

Data

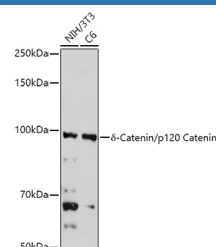
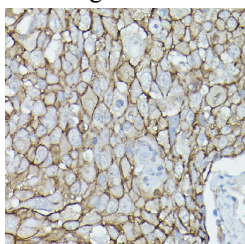


Western blot analysis of extracts of HT-29 cells using δ-Catenin/p120 Catenin Polyclonal Antibody at 1:1000 dilution.

Observed-MV: Refer to figures
Calculated-MV: 65-72 kDa/90-108 kDa

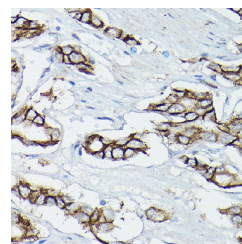


Immunohistochemistry of paraffin-embedded human liver cancer using [KO Validated] δ-Catenin/p120 Catenin Polyclonal Antibody at dilution of 1:50 (40x lens). Perform high pressure antigen retrieval with 10 mM citrate buffer pH 6.0 before commencing with IHC staining protocol.



Western blot analysis of extracts of various cell lines using δ-Catenin/p120 Catenin Polyclonal Antibody at 1:1000 dilution.

Observed-MV: Refer to figures
Calculated-MV: 65-72 kDa/90-108 kDa



Immunohistochemistry of paraffin-embedded human prostate cancer using [KO Validated] δ-Catenin/p120 Catenin Polyclonal Antibody at dilution of 1:50 (40x lens). Perform high pressure antigen retrieval with 10 mM citrate buffer pH 6.0 before commencing with IHC staining protocol.

For Research Use Only

Immunohistochemistry of paraffin-embedded human urothelial carcinoma using [KO Validated] δ -Catenin/p120 Catenin Polyclonal Antibody at dilution of 1:50 (40x lens). Perform high pressure antigen retrieval with 10 mM citrate buffer pH 6.0 before commencing

Preparation & Storage

Storage	Store at -20°C Valid for 12 months. Avoid freeze / thaw cycles.
Shipping	The product is shipped with ice pack, upon receipt, store it immediately at the temperature recommended.

Background

This gene encodes a member of the Armadillo protein family, which function in adhesion between cells and signal transduction. Multiple translation initiation codons and alternative splicing result in many different isoforms being translated. Not all of the full-length natures of the described transcript variants have been determined. Read-through transcription also exists between this gene and the neighboring upstream thioredoxin-related transmembrane protein 2 (TMX2) gene.

For Research Use Only