

KLF17 Polyclonal Antibody

catalog number: E-AB-64813

Note: Centrifuge before opening to ensure complete recovery of vial contents.

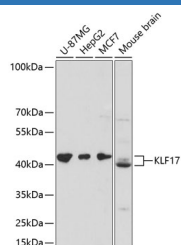
Description

Reactivity	Human;Mouse
Immunogen	Recombinant fusion protein of human KLF17 (NP_775755.3).
Host	Rabbit
Isotype	IgG
Purification	Affinity purification
Buffer	Phosphate buffered solution, pH 7.4, containing 0.05% stabilizer and 50% glycerol.

Applications

Applications	Recommended Dilution
WB	1:500-1:2000

Data



Western blot analysis of extracts of various cell lines using KLF17 Polyclonal Antibody at dilution of 1:3000.

Observed-MW:43 kDa

Calculated-MW:42 kDa

Preparation & Storage

Storage	Store at -20°C Valid for 12 months. Avoid freeze / thaw cycles.
Shipping	The product is shipped with ice pack, upon receipt, store it immediately at the temperature recommended.

Background

KLF17 (Kruppel Like Factor 17) is a Protein Coding gene. Diseases associated with KLF17 include Breast Cancer. Gene Ontology (GO) annotations related to this gene include DNA-binding transcription factor activity and transcription regulatory region DNA binding. An important paralog of this gene is KLF10.

For Research Use Only