

CXCL16 Polyclonal Antibody

catalog number: AN006900L

Note: Centrifuge before opening to ensure complete recovery of vial contents.

Description

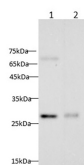
Reactivity	Mouse;Rat
Immunogen	Recombinant Rat CXCL16 protein expressed by E.coli
Host	Rabbit
Isotype	IgG
Purification	Antigen Affinity Purification
Conjugation	Unconjugated
buffer	PBS with 0.05% proclin 300, 1% protective protein and 50% glycerol,pH7.4

Applications

Recommended Dilution

WB	1:500-1:1000
-----------	--------------

Data



Western blot with Anti CXCL16 Polyclonal antibody at dilution of 1:1000. Lane 1: Mouse brain tissue lysate, Lane 2:

Rat brain tissue lysate.

Observed-MV:30 kDa

Calculated-MV:27 kDa

Preparation & Storage

Storage	Store at -20°C Valid for 12 months. Avoid freeze / thaw cycles.
Shipping	The product is shipped with ice pack, upon receipt, store it immediately at the temperature recommended.

Background

CXCL16 is produced by dendritic cells in lymphoid organ T cell zones and by cells in the splenic red pulp both as membrane-bound and soluble forms. Based on northern blot analysis, CXCL16 is also expressed in some non-lymphoid tissues such as lung, small intestine and kidney. The receptor for CXCL16 has been identified as CXCR6 (previously called Bonzo, STRL33 or TYMSTR), which is also a coreceptor for HIV entry. CXCR6 is expressed on naive CD8 cells, natural killer T cells and activated CD8 and CD4 T cells.

For Research Use Only