

## SERPINA9 Polyclonal Antibody

**catalog number:** E-AB-13030

**Note:** Centrifuge before opening to ensure complete recovery of vial contents.

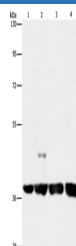
### Description

<b>Reactivity</b>	Human
<b>Immunogen</b>	Synthetic peptide of human SERPINA9
<b>Host</b>	Rabbit
<b>Isotype</b>	IgG
<b>Purification</b>	Affinity purification
<b>Buffer</b>	Phosphate buffered solution, pH 7.4, containing 0.05% stabilizer and 50% glycerol.

### Applications

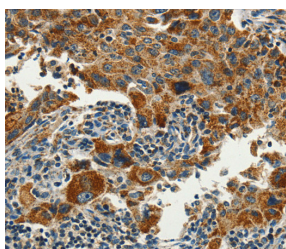
Applications	Recommended Dilution
<b>WB</b>	1:500-1:2000
<b>IHC</b>	1:50-1:200

### Data

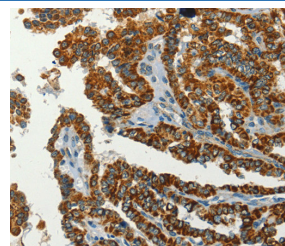


Western Blot analysis of 293T and 231 cell, U937 and Raji cell using SERPINA9 Polyclonal Antibody at dilution of 1:350

**Calculated-MW:47 kDa**



Immunohistochemistry of paraffin-embedded Human lung cancer using SERPINA9 Polyclonal Antibody at dilution of 1:60



Immunohistochemistry of paraffin-embedded Human thyroid cancer using SERPINA9 Polyclonal Antibody at dilution of 1:60

### Preparation & Storage

<b>Storage</b>	Store at -20°C Valid for 12 months. Avoid freeze / thaw cycles.
<b>Shipping</b>	The product is shipped with ice pack, upon receipt, store it immediately at the temperature recommended.

### Background

### For Research Use Only

Serpin A9 also known as centerin or GCET1 is a protein that in humans is encoded by the SERPINA9 gene located on chromosome 14q32.1.[1] Serpin A9 is a member of the serpin family of serine protease inhibitors. The expression of SERPINA9 is restricted to germinal center B cells and lymphoid malignancies. SERPINA9 is likely to function in vivo in the germinal center as an efficient inhibitor of trypsin-like proteases. Highly expressed in normal germinal center (GC) B-cells and GC B-cell-derived malignancies.

## For Research Use Only

Toll-free: 1-888-852-8623  
Web: [www.elabscience.com](http://www.elabscience.com)

Tel: 1-832-243-6086  
Email: [techsupport@elabscience.com](mailto:techsupport@elabscience.com)

Fax: 1-832-243-6017

Rev. V1.9