

Recombinant Human Cathepsin A/CTSA Protein (His Tag)

Catalog Number: PKSH032178

Note: Centrifuge before opening to ensure complete recovery of vial contents.

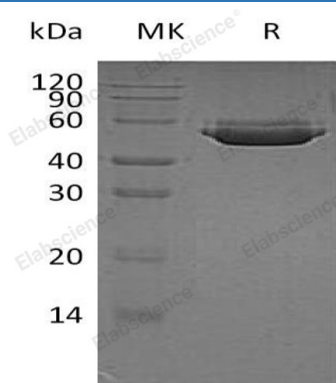
Description

Species	Human
Source	HEK293 Cells-derived Human Cathepsin A;CTSA protein Ala29-Tyr480, with an C-terminal His
Calculated MW	52.2 kDa
Observed MW	58-60 kDa
Accession	P10619
Bio-activity	Not validated for activity

Properties

Purity	> 95 % as determined by reducing SDS-PAGE.
Concentration	Subject to label value.
Endotoxin	< 1.0 EU per µg of the protein as determined by the LAL method.
Storage	Store at < -20°C, stable for 6 months. Please minimize freeze-thaw cycles.
Shipping	This product is provided as liquid. It is shipped at frozen temperature with blue ice/gel packs. Upon receipt, store it immediately at < - 20°C.
Formulation	Supplied as a 0.2 µm filtered solution of 20mM PB, 150mM NaCl, pH 7.4.

Data



> 95 % as determined by reducing SDS-PAGE.

Background

Cathepsin A is active in cellular compartments called lysosomes. These compartments contain enzymes that digest and recycle materials when they are no longer needed. Cathepsin A interacts with the enzymes β -galactosidase and neuraminidase 1, which play a role in the breakdown of complexes of sugar molecules (oligosaccharides) attached to certain proteins (glycoproteins) or fats (glycolipids). Cathepsin A forms a complex with these two enzymes and directs their transport within the cell to the lysosomes. Within lysosomes, cathepsin A activates the enzymes and prevents their breakdown.