

## Recombinant Human IL-17D Protein(Gst Tag)

**Catalog Number:** PDEH100605

**Note:** Centrifuge before opening to ensure complete recovery of vial contents.

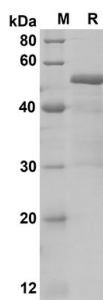
### Description

|                      |  |
|----------------------|--|
| <b>Species</b>       | Human  |
| <b>Source</b>        | E.coli-derived Human IL-17D protein Ala16-Pro202, with an N-terminal Gst |
| <b>Calculated MW</b> | 46.5 kDa   |
| <b>Observed MW</b>   | 50 kDa   |
| <b>Accession</b>     | Q8TAD2   |
| <b>Bio-activity</b>  | Not validated for activity   |

### Properties

|                       |  |
|-----------------------|--|
| <b>Purity</b>         | > 90% as determined by reducing SDS-PAGE.  |
| <b>Endotoxin</b>      | < 10 EU/mg of the protein as determined by the LAL method  |
| <b>Storage</b>        | Generally, lyophilized proteins are stable for up to 12 months when stored at -20 to -80 °C. Reconstituted protein solution can be stored at 4-8°C for 2-7 days. Aliquots of reconstituted samples are stable at < -20°C for 3 months. |
| <b>Shipping</b>       | This product is provided as lyophilized powder which is shipped with ice packs.  |
| <b>Formulation</b>    | Lyophilized from a 0.2 µm filtered solution in PBS with 5% Trehalose and 5% Mannitol.  |
| <b>Reconstitution</b> | It is recommended that sterile water be added to the vial to prepare a stock solution of 0.5 mg/mL. Concentration is measured by UV-Vis.   |

### Data



SDS-PAGE analysis of Human IL-17D proteins, 2 µg/lane of

Recombinant Human IL-17D proteins was resolved with  
SDS-PAGE under reducing conditions, showing bands at 50  
KD

### Background

IL17D is a secreted cytokine with homology to the IL-17 family of proteins. IL17D is preferentially expressed in skeletal muscle, brain, adipose tissue, heart, lung, and pancreas. The treatment of endothelial cells with IL17D has been shown to stimulate the production of other cytokines including IL6, IL8 and CSF2/ GM-CSF. The increased expression of IL8 induced by IL17D was found to be NF-kappa B-dependent.

### For Research Use Only

Toll-free: 1-888-852-8623  
Web: [www.elabscience.com](http://www.elabscience.com)

Tel: 1-832-243-6086  
Email: [techsupport@elabscience.com](mailto:techsupport@elabscience.com)

Fax: 1-832-243-6017

Rev. V1.7