

Recombinant Human PGD Protein (Human Cells, His Tag)

Catalog Number: PKSH033424

Note: Centrifuge before opening to ensure complete recovery of vial contents.

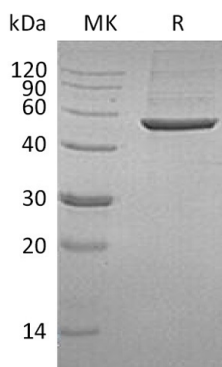
Description

Species	Human
Source	HEK293 Cells-derived Human PGD protein Met 1-Ala483, with an C-terminal His
Mol_Mass	54.2 kDa
Accession	P52209
Bio-activity	Not validated for activity

Properties

Purity	> 95 % as determined by reducing SDS-PAGE.
Endotoxin	< 1.0 EU per µg of the protein as determined by the LAL method.
Storage	Store at < -20°C, stable for 6 months. Please minimize freeze-thaw cycles.
Shipping	This product is provided as liquid. It is shipped at frozen temperature with blue ice/gel packs. Upon receipt, store it immediately at < - 20°C.
Formulation	Supplied as a 0.2 µm filtered solution of 20mM PB, 150mM NaCl, pH 7.4.
Reconstitution	Not Applicable

Data



> 95 % as determined by reducing SDS-PAGE.

Background

6-phosphogluconate dehydrogenase (PGD) is a cytoplasm-located protein; and belongs to the 6-phosphogluconate dehydrogenase family. 6PGD is the second dehydrogenase in the pentose phosphate shunt. It catalyzes the oxidative decarboxylation of 6-phosphogluconate to ribulose 5-phosphate and CO₂; with concomitant reduction of NADP to NADPH. Mutations within the gene coding this enzyme result in 6-phosphogluconate dehydrogenase deficiency; an autosomal hereditary disease effecting the red blood cells.

For Research Use Only

Toll-free: 1-888-852-8623
Web: www.elabscience.com

Tel: 1-832-243-6086
Email: techsupport@elabscience.com

Fax: 1-832-243-6017