

Recombinant Human Reticulocalbin 3/RCN3 Protein (aa 21-328, His Tag)

Catalog Number: PKSH033292

Note: Centrifuge before opening to ensure complete recovery of vial contents.

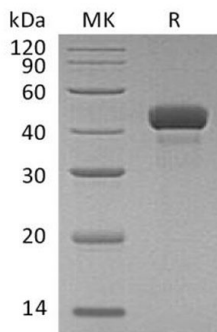
Description

| | |
|----------------------|---|
| Species | Human |
| Source | HEK293 Cells-derived Human Reticulocalbin 3/RCN3 protein Lys21-Leu328, with an C-terminal His |
| Calculated MW | 36.2 kDa |
| Observed MW | 43 kDa |
| Accession | Q96D15 |
| Bio-activity | Not validated for activity |

Properties

| | |
|----------------------|---|
| Purity | > 95 % as determined by reducing SDS-PAGE. |
| Concentration | Subject to label value. |
| Endotoxin | < 1.0 EU per µg of the protein as determined by the LAL method. |
| Storage | Store at < -20°C, stable for 6 months. Please minimize freeze-thaw cycles. |
| Shipping | This product is provided as liquid. It is shipped at frozen temperature with blue ice/gel packs. Upon receipt, store it immediately at < -20°C. |
| Formulation | Supplied as a 0.2 µm filtered solution of 20mM Tris-HCl, 150mM NaCl, 1mM DTT, 10% Glycerol, pH 7.4. |

Data



> 95 % as determined by reducing SDS-PAGE.

Background

Reticulocalbin-3 is a member of the CREC family that is involved in the secretory pathway. Members of the CREC family consist of a number of multiple EF-hand domains. Reticulocalbin-3 localizes to the endoplasmic reticulum lumen. The bioinformatic analysis of Reticulocalbin-3 reveal that it is a putative Ca²⁺-binding protein. In addition; it has been shown that autoactivation and secretion of PACE4 was increased upon co-expression with Reticulocalbin-3. The proPACE4-RCN-3 complex is plays an important role in the biosynthesis of PACE4.

For Research Use Only