

# Recombinant Human Calmodulin 2/CALM2 Protein (His Tag)



Catalog Number:PKSH030840

**Note:** Centrifuge before opening to ensure complete recovery of vial contents.

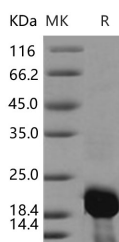
## Description

<b>Synonyms</b>	caM;CAMII;LQT15;PHKD;PHKD2
<b>Species</b>	Human
<b>Expression Host</b>	E.coli
<b>Sequence</b>	Met 1-Lys149
<b>Accession</b>	P0DP24
<b>Calculated Molecular Weight</b>	18.7 kDa
<b>Observed molecular weight</b>	19-22 kDa
<b>Tag</b>	N-His

## Properties

<b>Purity</b>	> 85 % as determined by reducing SDS-PAGE.
<b>Endotoxin</b>	Please contact us for more information.
<b>Storage</b>	Generally, lyophilized proteins are stable for up to 12 months when stored at -20 to -80°C. Reconstituted protein solution can be stored at 4-8°C for 2-7 days. Aliquots of reconstituted samples are stable at < -20°C for 3 months.
<b>Shipping</b>	This product is provided as lyophilized powder which is shipped with ice packs.
<b>Formulation</b>	Lyophilized from sterile PBS, pH 7.4 Normally 5 % - 8 % trehalose, mannitol and 0.01 % Tween80 are added as protectants before lyophilization. Please refer to the specific buffer information in the printed manual.
<b>Reconstitution</b>	Please refer to the printed manual for detailed information.

## Data



> 85 % as determined by reducing SDS-PAGE.

## Background

Calmodulin 2, also known as CALM2, is a calmodulin. Calmodulin 2 mediates the control of a large number of enzymes, ion channels and other proteins by  $\text{Ca}^{2+}$ . It is involved in a genetic pathway that regulates the centrosome cycle and progression through cytokinesis. Calmodulin 2 gene may be a genetic determinant of hip osteoarthritis (OA). OA is a degenerative disease characterized by gradual loss of articular cartilage and is a leading cause of disability in elderly populations. CALM2 was most abundantly expressed in articular chondrocytes and OA cartilage.

## For Research Use Only

A Reliable Research Partner in Life Science and Medicine

Toll-free: 1-888-852-8623

Web: [www.elabscience.com](http://www.elabscience.com)

Tel: 1-832-243-6086

Email: [techsupport@elabscience.com](mailto:techsupport@elabscience.com)

Fax: 1-832-243-6017