

## PE/Elab Fluor® 594 Anti-Human FOLR1 Antibody[LK26]

Catalog Number: AN00483P

Note: Centrifuge before opening to ensure complete recovery of vial contents.

### Description

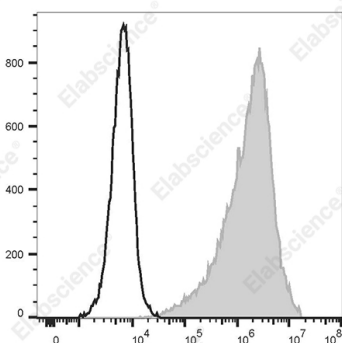
<b>Reactivity</b>	Human
<b>Host</b>	Mouse
<b>Isotype</b>	Mouse IgG2a, κ
<b>Clone No.</b>	LK26
<b>Isotype Control</b>	PE/Elab Fluor® 594 Mouse IgG2a, κ Isotype Control[C1.18.4] [Product E-AB-F09802P]
<b>Conjugation</b>	PE/Elab Fluor® 594
<b>Conjugation Information</b>	PE/Elab Fluor® 594 is designed to be excited by the blue (488 nm), Green (532 nm) and yellow-green (561 nm) lasers and detected using an optical filter centered near 620 nm (e.g., a 610/20 nm bandpass filter).
<b>Storage Buffer</b>	Phosphate buffered solution, pH 7.2, containing 0.09% stabilizer.

### Applications

### Recommended usage

<b>FCM</b>	Each lot of this antibody is quality control tested by flow cytometric analysis. <b>The amount of the reagent is suggested to be used 5 μL of antibody per test (million cells in 100 μL staining volume or per 100 μL of whole blood).</b> Please check your vial before the experiment. Since applications vary, the appropriate dilutions must be determined for individual use.
------------	---

### Data



Staining of the HeLa cell line with PE/Elab Fluor® 594 Anti-Human FOLR1 Antibody[LK26] (filled gray histogram) or

PE/Elab Fluor® 594 Mouse IgG2a, κ Isotype Control (empty black histogram). Total viable cells were used for analysis.

### Preparation & Storage

<b>Storage</b>	Keep as concentrated solution. This product can be stored at 2-8°C for 24 months. Please protected from prolonged exposure to light and do not freeze.
<b>Shipping</b>	Ice bag

### Antigen Information

<b>Alternate Names</b>	Folate receptor alpha;FR-alpha;KB cells FBP;folate binding protein;folate receptor;adult;adult folate-binding protein;ovarian tumor-associated antigen MOV18;AN00483
<b>Uniprot ID</b>	P15328

### For Research Use Only

**Gene ID**

2348

**Background**

Folate receptor (FOLR1), also known as folate receptor alpha, is a folate-binding protein (FBP) expressed in adults. It has high affinity for folic acid and its metabolites, including 5-methyltetrahydrofolate (5-MTF), the biologically active form of folic acid used for DNA synthesis and the cysteine cycle. FOLR1 mediates intracellular delivery of 5-MTF. FOLR1 is overexpressed in a variety of tumors, including breast, colorectal, and brain.