

Recombinant Paxillin Monoclonal Antibody

catalog number: **E-AB-81593**

Note: Centrifuge before opening to ensure complete recovery of vial contents.

Description

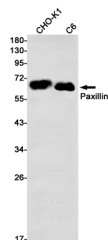
Reactivity	Human;Rat;Hamster
Immunogen	A synthetic peptide of human Paxillin
Host	Rabbit
Isotype	IgG
Clone	R07-1B4
Purification	Affinity Purified
Buffer	50mM Tris-Glycine(pH 7.4), 0.15M NaCl, 40% Glycerol, 0.05% stabilizer and 0.05% protective protein.

Applications

Recommended Dilution

WB	1:1000-1:2000
IHC	1:20-1:100

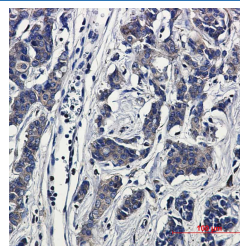
Data



Western blot detection of Paxillin in CHO-K1, C6 cell lysates using Paxillin Rabbit mAb (1:1000 diluted). Predicted band size: 65kDa. Observed band size: 65kDa.

Observed-MW: 65 kDa

Calculated-MW: 65 kDa



Immunohistochemical of Paxillin in Human breast cancer tissue using Paxillin antibody at dilution 1:20

Preparation & Storage

Storage	Store at -20°C Valid for 12 months. Avoid freeze / thaw cycles.
Shipping	The product is shipped with ice pack, upon receipt, store it immediately at the temperature recommended.

Background

This gene encodes a cytoskeletal protein involved in actin-membrane attachment at sites of cell adhesion to the extracellular matrix (focal adhesion). Alternatively spliced transcript variants encoding different isoforms have been described for this gene. These isoforms exhibit different expression pattern, and have different biochemical, as well as physiological properties (PMID:9054445).

For Research Use Only