

# Recombinant Human CDKN1B Protein (His Tag)

Catalog Number:PKSH032314



**Note:** Centrifuge before opening to ensure complete recovery of vial contents.

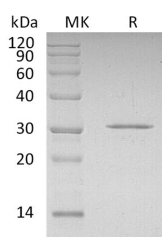
## Description

<b>Synonyms</b>	Cyclin-Dependent Kinase Inhibitor 1B;Cyclin-Dependent Kinase Inhibitor p27;p27Kip1;CDKN1B;KIP1
<b>Species</b>	Human
<b>Expression Host</b>	E.coli
<b>Sequence</b>	Met 1-Thr198
<b>Accession</b>	P46527
<b>Calculated Molecular Weight</b>	24.2 kDa
<b>Observed molecular weight</b>	30 kDa
<b>Tag</b>	N-His

## Properties

<b>Purity</b>	> 95 % as determined by reducing SDS-PAGE.
<b>Endotoxin</b>	< 1.0 EU per µg of the protein as determined by the LAL method.
<b>Storage</b>	Generally, lyophilized proteins are stable for up to 12 months when stored at -20 to -80°C. Reconstituted protein solution can be stored at 4-8°C for 2-7 days. Aliquots of reconstituted samples are stable at < -20°C for 3 months.
<b>Shipping</b>	This product is provided as lyophilized powder which is shipped with ice packs.
<b>Formulation</b>	Lyophilized from a 0.2 µm filtered solution of PBS, pH 7.4. Normally 5 % - 8 % trehalose, mannitol and 0.01% Tween80 are added as protectants before lyophilization. Please refer to the specific buffer information in the printed manual.
<b>Reconstitution</b>	Please refer to the printed manual for detailed information.

## Data



> 95 % as determined by reducing SDS-PAGE.

## Background

Cyclin-Dependent Kinase Inhibitor 1B (CDKN1B) is a Kinesin-related motor protein necessary for mitotic spindle assembly and chromosome segregation. CDKN1B is expressed in all tissues with highest levels observed in skeletal muscle. CDKN1B is a potent inhibitor of Cyclin E- and Cyclin A-CDK2 complexes. CDKN1B forms a complex with Cyclin Type D-CDK4 complexes and is involved in the assembly, stability, and modulation of CCND1-CDK4 complex activation. In addition, CDKN1B acts as an inhibitor or an activator of Cyclin Type D-CDK4 complexes depending on its phosphorylation state and stoichiometry.

## For Research Use Only

A Reliable Research Partner in Life Science and Medicine

Toll-free: 1-888-852-8623

Web: [www.elabscience.com](http://www.elabscience.com)

Tel: 1-832-243-6086

Email: [techsupport@elabscience.com](mailto:techsupport@elabscience.com)

Fax: 1-832-243-6017