

## Elab Fluor® 647-conjugated Vinculin Monoclonal Antibody

catalog number: AN00297M

**Note:** Centrifuge before opening to ensure complete recovery of vial contents.

### Description

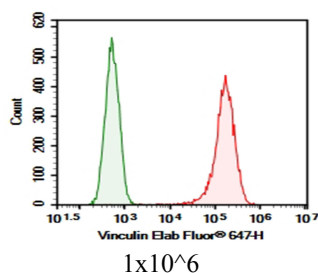
<b>Reactivity</b>	Human
<b>Immunogen</b>	Recombinant human Vinculin protein expressed by E.coli
<b>Host</b>	Mouse
<b>Isotype</b>	IgG1
<b>Clone</b>	4D4
<b>Purification</b>	Protein A/G Purification
<b>Conjugation</b>	Elab Fluor® 647(Ex/Em:650nm/665nm)
<b>Buffer</b>	PBS with 0.05% Proclin300, 1% protective protein and 50% glycerol, pH7.4

### Applications

### Recommended Dilution

<b>FCM</b>	0.2 µg per 10 <sup>6</sup> cells in a 100 µL suspension
------------	---

### Data



293T were intracellularly stained with 0.2 µg Elab Fluor® 647-conjugated Vinculin Monoclonal Antibody (red) and 0.2 µg E

lab Fluor® 647-conjugated Vinculin Monoclonal Antibody (green).

### Preparation & Storage

<b>Storage</b>	Store at -20°C Valid for 12 months. Avoid freeze / thaw cycles. Protected from prolonged exposure to light.
<b>Shipping</b>	The product is shipped with ice pack, upon receipt, store it immediately at the temperature recommended.

### Background

Vinculin belongs to the vinculin/alpha-catenin family. It is an actin filament (F-actin)-binding protein which involved in cell-matrix adhesion and cell-cell adhesion. Vinculin regulates cell-surface E-cadherin expression and potentiates mechanosensing by the E-cadherin complex. It may also play important roles in cell morphology and locomotion. Vinculin is a 117-kDa, 1,066-amino-acid protein which is ubiquitously expressed. Its splice variant, metavinculin (124 kDa), is muscle-specific.

### For Research Use Only