

AF/LE Purified Anti-Human HLA-A,B,C Antibody[W6/32]

catalog number: E-AB-F11300



Note: Centrifuge before opening to ensure complete recovery of vial contents.

Description

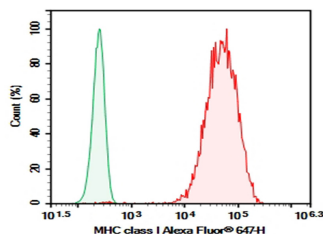
Reactivity	Human
Immunogen	Recombinant MHC class I protein
Host	Mouse
Isotype	Mouse IgG2a, κ
Clone	W6/32
Purification	>98%, Protein A/G purified
Conjugation	None (AF/LE)
buffer	Sterile PBS, pH 7.2. < 1.0 EU per mg of the antibody as determined by the LAL method

Applications

Recommended Dilution

FCM	2 $\mu\text{g/mL}$ (1×10^5 - 5×10^5 cells)
------------	---

Data



Human peripheral blood lymphocytes were stained with 0.2 μg AF/LE Purified Anti-Human HLA-A,B,C Antibody[W6/32] (Right) and 0.2 μg Mouse IgG2a, κ Isotype Control (Left), followed by Alexa Fluor® 647-conjugated Goat Anti-Mouse IgG Secondary Antibody.

Preparation & Storage

Storage	Store at 4°C valid for 12 months or -20°C valid for long term storage, avoid freeze / thaw cycles. This preparation contains no preservatives, thus it should be handled under aseptic conditions.
Shipping	Ice bag

Background

MHC class I antigens associated with β 2-microglobulin are expressed by all human nucleated cells. MHC class I molecules are involved in presentation of antigens to CD8⁺ T cells. They play an important role in cell-mediated immune responses and tumor surveillance.

For Research Use Only