

Recombinant Human RSK3/RPS6KA2 Protein (GST Tag)

Catalog Number: PKSH030377

Note: Centrifuge before opening to ensure complete recovery of vial contents.

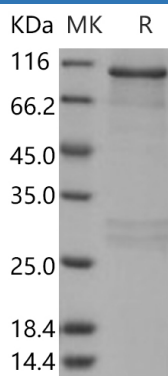
Description

Species	Human
Source	Baculovirus-Insect Cells-derived Human RSK3/RPS6KA2 protein Met 1-Leu 733, with an N-terminal GST
Calculated MW	110 kDa
Observed MW	110 kDa
Accession	Q15349-1
Bio-activity	The specific activity was determined to be 41 nmol/min/mg using synthetic RSK peptide (KRRRLSSLRA) as substrate.

Properties

Purity	> 84 % as determined by reducing SDS-PAGE.
Concentration	Subject to label value.
Endotoxin	< 1.0 EU per µg of the protein as determined by the LAL method.
Storage	Store at < -20°C, stable for 6 months. Please minimize freeze-thaw cycles.
Shipping	This product is provided as liquid. It is shipped at frozen temperature with blue ice/gel packs. Upon receipt, store it immediately at < -20°C.
Formulation	Supplied as sterile solution of 20mM Tris, 500mM NaCl, pH 7.0, 20mM GSH

Data



> 84 % as determined by reducing SDS-PAGE.

Background

Ribosomal protein S6 kinase alpha-2, also known as 90 kDa ribosomal protein S6 kinase 2, MAP kinase-activated protein kinase 1c, MAPK-activated protein kinase 1c, Ribosomal S6 kinase 3, RSK-3, RPS6KA2 and MAPKAPK1C, is a nucleus protein which belongs to the protein kinase superfamily, AGC Ser/Thr protein kinase family and S6 kinase subfamily. RPS6KA2 / RSK-3 is expressed in many tissues. Highest expression is in lung and skeletal muscle. The expression of RPS6KA2 reduced proliferation, caused G1 arrest, increased apoptosis, reduced levels of phosphorylated extracellular signal-regulated kinase and altered other cell cycle proteins. RPS6KA2 / RSK-3 contains one AGC-kinase C-terminal domain and two protein kinase domains. It forms a complex with either ERK1 or ERK2 in quiescent cells. It transiently dissociates following mitogenic stimulation. RPS6KA2 / RSK-3 is a serine/threonine kinase that may play a role in mediating the growth-factor and stress induced activation of the transcription factor CREB. RPS6KA1, RPS6KA2, RPS6KB1, RPS6KB2, and PDK1 are involved in several pathways central to the carcinogenic process, including regulation of cell growth, insulin, and inflammation.

For Research Use Only

Toll-free: 1-888-852-8623
Web: www.elabscience.com

Tel: 1-832-243-6086
Email: techsupport@elabscience.com

Fax: 1-832-243-6017