

FBLN1 Polyclonal Antibody

catalog number: **E-AB-91408**

Note: Centrifuge before opening to ensure complete recovery of vial contents.

Description

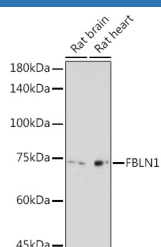
Reactivity	Human;Mouse;Rat
Immunogen	Recombinant fusion protein of human FBLN1
Host	Rabbit
Isotype	IgG
Purification	Affinity purification
Buffer	Phosphate buffered solution, pH 7.4, containing 0.05% stabilizer and 50% glycerol.

Applications

Recommended Dilution

WB	1:500-1:2000
-----------	--------------

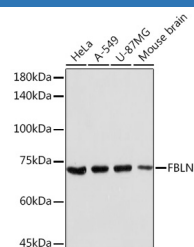
Data



Western blot analysis of extracts of various cell lines using FBLN1 Polyclonal Antibody at 1:2000 dilution.

Observed-MW:77 kDa

Calculated-MW:61 kDa/65 kDa/74 kDa/77 kDa



Western blot analysis of extracts of various cell lines using FBLN1 Polyclonal Antibody at 1:2000 dilution.

Observed-MW:77 kDa

Calculated-MW:61 kDa/65 kDa/74 kDa/77 kDa

Preparation & Storage

Storage	Store at -20°C Valid for 12 months. Avoid freeze / thaw cycles.
Shipping	The product is shipped with ice pack, upon receipt, store it immediately at the temperature recommended.

Background

Fibulin 1 is a secreted glycoprotein that becomes incorporated into a fibrillar extracellular matrix. Calcium-binding is apparently required to mediate its binding to laminin and nidogen. It mediates platelet adhesion via binding fibrinogen. Four splice variants which differ in the 3' end have been identified. Each variant encodes a different isoform, but no functional distinctions have been identified among the four variants.

For Research Use Only