

## Recombinant VEGF Receptor 1 Monoclonal Antibody

catalog number: **E-AB-81493**

**Note:** Centrifuge before opening to ensure complete recovery of vial contents.

### Description

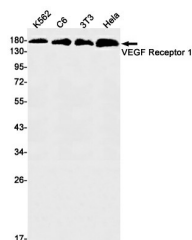
<b>Reactivity</b>	Human;Mouse;Rat
<b>Immunogen</b>	A synthetic peptide of human VEGF Receptor 1
<b>Host</b>	Rabbit
<b>Isotype</b>	IgG
<b>Clone</b>	R06-1A4
<b>Purification</b>	Affinity Purified
<b>Buffer</b>	50mM Tris-Glycine(pH 7.4), 0.15M NaCl, 40% Glycerol, 0.05% stabilizer and 0.05% protective protein.

### Applications

### Recommended Dilution

<b>WB</b>	1:500-1:1000
<b>IHC</b>	1:50-1:100

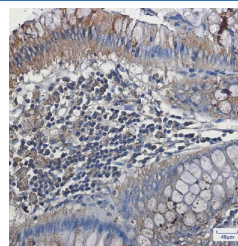
### Data



Western blot detection of VEGF Receptor 1 in K562,C6,3T3,Hela cell lysates using VEGF Receptor 1 Rabbit mAb(1:1000 diluted).Predicted band size:151kDa.Observed band size:180kDa.

**Observed-MW:180 kDa**

**Calculated-MW:151 kDa**



Immunohistochemistry of VEGF Receptor 1 in paraffin-embedded Human colon cancer tissue using VEGF Receptor 1 Rabbit mAb at dilution 1:50

### Preparation & Storage

<b>Storage</b>	Store at -20°C Valid for 12 months. Avoid freeze / thaw cycles.
<b>Shipping</b>	The product is shipped with ice pack,upon receipt,store it immediately at the temperature recommended.

### Background

This gene encodes a member of the vascular endothelial growth factor receptor (VEGFR) family. VEGFR family members are receptor tyrosine kinases (RTKs) which contain an extracellular ligand-binding region with seven immunoglobulin (Ig)-like domains, a transmembrane segment, and a tyrosine kinase (TK) domain within the cytoplasmic domain. This protein binds to VEGFR-A, VEGFR-B and placental growth factor and plays an important role in angiogenesis and vasculogenesis. Expression of this receptor is found in vascular endothelial cells, placental trophoblast cells and peripheral blood monocytes. Multiple transcript variants encoding different isoforms have been found for this gene. Isoforms include a full-length transmembrane receptor isoform and shortened, soluble isoforms. The soluble isoforms are associated with the onset of pre-eclampsia.

### For Research Use Only