

# AP2A1 Polyclonal Antibody

Catalog Number: E-AB-17662



**Note:** Centrifuge before opening to ensure complete recovery of vial contents.

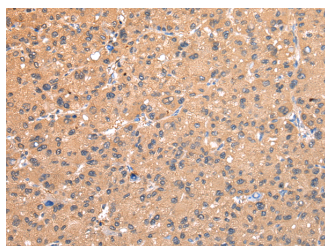
## Description

|                     |   |
|---------------------|---|
| <b>Reactivity</b>   | Human, Mouse  |
| <b>Immunogen</b>    | Synthetic peptide of human AP2A1                    |
| <b>Host</b>         | Rabbit  |
| <b>Isotype</b>      | IgG   |
| <b>Purification</b> | Affinity purification                               |
| <b>Conjugation</b>  | Unconjugated  |
| <b>Formulation</b>  | PBS with 0.05% sodium azide and 50% glycerol, PH7.4 |

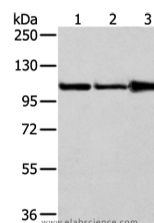
## Applications Recommended Dilution

|              |             |
|--------------|-------------|
| <b>WB</b>    | 1:500-2000  |
| <b>IHC</b>   | 1:25-100    |
| <b>ELISA</b> | 1:2000-5000 |

## Data



Immunohistochemistry of paraffin-embedded Human liver cancer using AP2A1 Polyclonal Antibody at dilution of 1/20  
**Calculated Mw: 108 kDa**



Western Blot analysis of A431, 231 and NIH/3T3 cell using AP2A1 Polyclonal Antibody at dilution of 1/250

## Preparation & Storage

**Storage** Store at -20°C. Avoid freeze / thaw cycles.

## Background

This gene encodes the alpha 1 adaptin subunit of the adaptor protein 2 (AP-2) complex found in clathrin coated vesicles. The AP-2 complex is a heterotetramer consisting of two large adaptins (alpha or beta), a medium adaptin (mu), and a small adaptin (sigma). The complex is part of the protein coat on the cytoplasmic face of coated vesicles which links clathrin to receptors in vesicles. Alternative splicing of this gene results in two transcript variants encoding two different isoforms.

## For Research Use Only

A Reliable Research Partner in Life Science and Medicine

Toll-free: 1-888-852-8623

Web: [www.elabscience.com](http://www.elabscience.com)

Tel: 1-832-243-6086

Email: [techsupport@elabscience.com](mailto:techsupport@elabscience.com)

Fax: 1-832-243-6017