

Recombinant Human CDKL2 Protein (His Tag)

Catalog Number: PKSH030371

Note: Centrifuge before opening to ensure complete recovery of vial contents.

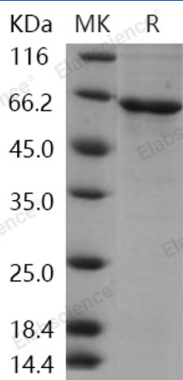
Description

Species	Human
Source	Baculovirus-Insect Cells-derived Human CDKL2 protein Met 1-His 493, with an N-terminal His
Calculated MW	58.3 kDa
Observed MW	63 kDa
Accession	Q92772
Bio-activity	Not validated for activity

Properties

Purity	> 80 % as determined by reducing SDS-PAGE.
Concentration	Subject to label value.
Endotoxin	< 1.0 EU per µg of the protein as determined by the LAL method.
Storage	Store at < -20°C, stable for 6 months. Please minimize freeze-thaw cycles.
Shipping	This product is provided as liquid. It is shipped at frozen temperature with blue ice/ gel packs. Upon receipt, store it immediately at < - 20°C.
Formulation	Supplied as sterile solution of 20mM Tris, 500mM NaCl, pH 7.4, 10% glycerol

Data



> 80 % as determined by reducing SDS-PAGE.

Background

Cyclin-dependent kinase-like 2 (Cdkl2) is a member of cdc2-related serine / threonine protein kinase family and it is found expressed in various brain regions, including the cerebral cortex, entorinal cortex, hippocampus, amygdala, and dorsal thalamus. The high expression in these brain regions suggests that Cdkl2 may have functions in cognition and emotion processes. Cdkl2 accumulates primarily in the cytoplasm, with lower levels in the nucleus.

For Research Use Only

Toll-free: 1-888-852-8623
Web: www.elabscience.com

Tel: 1-832-243-6086
Email: techsupport@elabscience.com

Fax: 1-832-243-6017