

HMGCS2 Polyclonal Antibody

catalog number: E-AB-16483

Note: Centrifuge before opening to ensure complete recovery of vial contents.

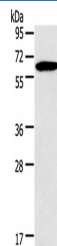
Description

Reactivity	Human;Mouse
Immunogen	Synthetic peptide of human HMGCS2
Host	Rabbit
Isotype	IgG
Purification	Affinity purification
Buffer	Phosphate buffered solution, pH 7.4, containing 0.05% stabilizer and 50% glycerol.

Applications

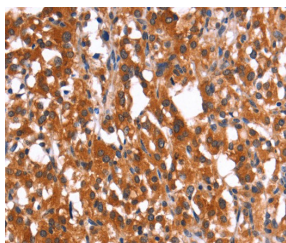
Applications	Recommended Dilution
WB	1:500-1:2000
IHC	1:100-1:300

Data

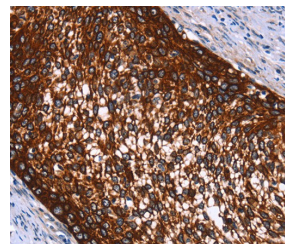


Western Blot analysis of Mouse brain tissue using HMGCS2 Polyclonal Antibody at dilution of 1:200

Calculated-MW:57 kDa



Immunohistochemistry of paraffin-embedded Human thyroid cancer using HMGCS2 Polyclonal Antibody at dilution of 1:40



Immunohistochemistry of paraffin-embedded Human cervical cancer using HMGCS2 Polyclonal Antibody at dilution of 1:40

Preparation & Storage

Storage	Store at -20°C Valid for 12 months. Avoid freeze / thaw cycles.
Shipping	The product is shipped with ice pack, upon receipt, store it immediately at the temperature recommended.

Background

The protein encoded by this gene belongs to the HMG-CoA synthase family. It is a mitochondrial enzyme that catalyzes the first reaction of ketogenesis, a metabolic pathway that provides lipid-derived energy for various organs during times of carbohydrate deprivation, such as fasting. Mutations in this gene are associated with HMG-CoA synthase deficiency. Alternatively spliced transcript variants encoding different isoforms have been found for this gene.

For Research Use Only