

## Recombinant Human CXCL5 Protein

**Catalog Number:** PKSH032303

**Note:** Centrifuge before opening to ensure complete recovery of vial contents.

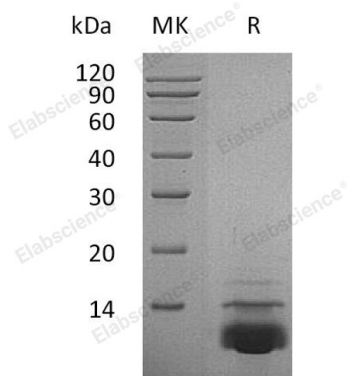
### Description

<b>Species</b>	Human
<b>Source</b>	E.coli-derived Human CXCL5 protein Arg 45-Asn114, with an N-terminal His
<b>Calculated MW</b>	8.5 kDa
<b>Observed MW</b>	12 kDa
<b>Accession</b>	P42830
<b>Bio-activity</b>	Measure by its ability to chemoattract BaF3 cells transfected with human CXCR2. The ED <sub>50</sub> for this effect is <10 ng/mL.

### Properties

<b>Purity</b>	> 98 % as determined by reducing SDS-PAGE.
<b>Endotoxin</b>	< 0.1 EU per µg of the protein as determined by the LAL method.
<b>Storage</b>	Generally, lyophilized proteins are stable for up to 12 months when stored at -20 to -80 °C. Reconstituted protein solution can be stored at 4-8°C for 2-7 days. Aliquots of reconstituted samples are stable at < -20°C for 3 months.
<b>Shipping</b>	This product is provided as lyophilized powder which is shipped with ice packs.
<b>Formulation</b>	Lyophilized from sterile PBS, pH 7.4. Normally 5% - 8% trehalose, mannitol and 0.01% Tween 80 are added as protectants before lyophilization. Please refer to the specific buffer information in the printed manual.
<b>Reconstitution</b>	Please refer to the printed manual for detailed information.

### Data



> 98 % as determined by reducing SDS-PAGE.

### Background

C-X-C Motif Chemokine 5 (CXCL5) is a member of the Intercrine Alpha (Chemokine CXC) family. CXCL5 can be cleaved into the following two chains, ENA-78 (8-78) and ENA-78 (9-78). In vitro, ENA-78(8-78) and ENA-78 (9-78) show a threefold higher chemotactic activity for neutrophil granulocytes. CXCL5 is a secreted protein and exercises the functions primarily through interactions with CXCR2. The upregulation of CXCL5 contributes to increased vascularization, tumor growth, and metastasis in many cancers.

### For Research Use Only