

## Elab Fluor® 700 Anti-Human CD244 Antibody[C1.7]

Catalog Number: E-AB-F1374M1

**Note:** Centrifuge before opening to ensure complete recovery of vial contents.

### Description

Reactivity	Human
Host	Mouse
Isotype	Mouse IgG1, κ
Clone No.	C1.7
Isotype Control	Elab Fluor® 700 Mouse IgG1, κ Isotype Control[MOPC-21] [Product E-AB-F09792M1]
Conjugation	Elab Fluor® 700
Conjugation Information	Elab Fluor® 700 is designed to be excited by the Red laser (627-640 nm) and detected using an optical filter centered near 719 nm (e.g., a 725/40 nm bandpass filter).
Storage Buffer	Phosphate buffered solution, pH 7.2, containing 0.09% stabilizer and 1% protein protectant.

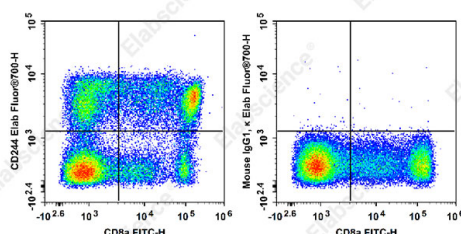
### Applications

### Recommended usage

#### FCM

Each lot of this antibody is quality control tested by flow cytometric analysis. **The amount of the reagent is suggested to be used 5 µL of antibody per test (million cells in 100 µL staining volume or per 100 µL of whole blood).** Please check your vial before the experiment. Since applications vary, the appropriate dilutions must be determined for individual use.

### Data



Staining of normal human peripheral blood cells with FITC

Anti-Human CD8a Antibody [OKT-8] and Elab Fluor® 700

Anti-Human CD244 Antibody[C1.7](left) or Elab Fluor® 700

Mouse IgG1, κ Isotype Control(right). Cells in the

lymphocytes gate were used for analysis.

### Preparation & Storage

Storage	Keep as concentrated solution. This product can be stored at 2-8°C for 12 months. Please protected from prolonged exposure to light and do not freeze.
Shipping	Ice bag

### Antigen Information

Alternate Names	2B4;SLAMF4
Uniprot ID	Q9BZW8

### For Research Use Only

Toll-free: 1-888-852-8623  
Web: [www.elabscience.com](http://www.elabscience.com)

Tel: 1-832-243-6086  
Email: [techsupport@elabscience.com](mailto:techsupport@elabscience.com)

Fax: 1-832-243-6017

Rev. V1.6

**Gene ID**

51744

**Background**

CD244, known as 2B4, is a 38 kD type I transmembrane protein. It is a member of the CD2 subset of the immunoglobulin superfamily (IgSF) molecules. CD244 is expressed on NK cells, a subset of T cells (including most CD8+ T cells and  $\gamma\delta$  T cells), monocytes, basophils, and eosinophils. CD48 is the ligand of CD244. It has been reported that ligation of human CD244 results in enhanced NK cell cytotoxicity and cytokine production. Recent studies have shown that human CD244, like murine CD244, has both activating and inhibitory functions, which are dependent on the density of surface 2B4 expression, degree of ligation, and the level of the adaptor molecule SAP expression.