

## Recombinant Human EDIL3/Del-1 Protein (His Tag)

Catalog Number: PKSH032371

**Note:** Centrifuge before opening to ensure complete recovery of vial contents.

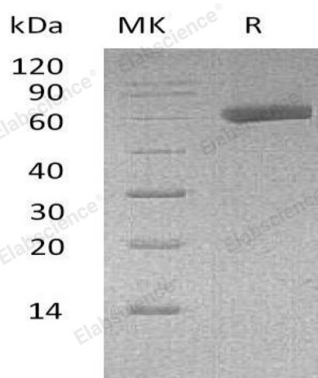
### Description

|                      |   |
|----------------------|---|
| <b>Species</b>       | Human   |
| <b>Source</b>        | HEK293 Cells-derived Human EDIL3;Del-1 protein Asp24-Glu480, with an C-terminal His |
| <b>Calculated MW</b> | 53.1 kDa  |
| <b>Observed MW</b>   | 55-65 kDa   |
| <b>Accession</b>     | O43854-1  |
| <b>Bio-activity</b>  | Not validated for activity  |

### Properties

|                       |  |
|-----------------------|--|
| <b>Purity</b>         | > 95 % as determined by reducing SDS-PAGE.   |
| <b>Endotoxin</b>      | < 1.0 EU per µg of the protein as determined by the LAL method.  |
| <b>Storage</b>        | Generally, lyophilized proteins are stable for up to 12 months when stored at -20 to -80°C. Reconstituted protein solution can be stored at 4-8°C for 2-7 days. Aliquots of reconstituted samples are stable at < -20°C for 3 months.  |
| <b>Shipping</b>       | This product is provided as lyophilized powder which is shipped with ice packs.  |
| <b>Formulation</b>    | Lyophilized from a 0.2 µm filtered solution of 20mM Citrate, 6% Trehalose, 4% Mannitol, 100mM NaCl, 0.05% Tween 80, pH 5.0.<br>Normally 5% - 8% trehalose, mannitol and 0.01% Tween 80 are added as protectants before lyophilization.<br>Please refer to the specific buffer information in the printed manual. |
| <b>Reconstitution</b> | Please refer to the printed manual for detailed information.   |

### Data



> 95 % as determined by reducing SDS-PAGE.

### Background

#### For Research Use Only

EGF-Like Repeat and Discoidin I-Like Domain-Containing Protein 3 (EDIL3) is a 52 kDa extracellular matrix protein that is expressed by endothelial tissues during embryonic vascular development. EDIL3 becomes quiescent at the time of birth, and is no longer expressed in normal adult tissues. EDIL3 has been found to be re-expressed in a number of human tumors as well as in ischemic muscles and ischemic brain tissue, which may play an important role in adult angiogenesis. EDIL3 promotes adherence and migration of endothelial cells, and acts as an endothelial cell survival agent through upregulation of Bcl-2 expression. EDIL3 has also been shown to be an endogenous inhibitor of inflammatory cell recruitment by interfering with the integrin LFA-1-dependent leukocyte-endothelial adhesion. Human EDIL3 is synthesized as a precursor with a 16 amino acid signal sequence and a 464 amino acid mature chain.

## For Research Use Only

Toll-free: 1-888-852-8623  
Web: [www.elabscience.com](http://www.elabscience.com)

Tel: 1-832-243-6086  
Email: [techsupport@elabscience.com](mailto:techsupport@elabscience.com)

Fax: 1-832-243-6017