

WDFY2 Polyclonal Antibody

catalog number: E-AB-18486

Note: Centrifuge before opening to ensure complete recovery of vial contents.

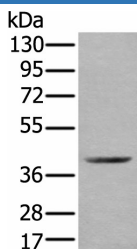
Description

Reactivity	Human;Mouse
Immunogen	Fusion protein of human WDFY2
Host	Rabbit
Isotype	IgG
Purification	Antigen affinity purification
Buffer	Phosphate buffered solution, pH 7.4, containing 0.05% stabilizer and 50% glycerol.

Applications

Applications	Recommended Dilution
WB	1:500-1:2000
IHC	1:30-1:150

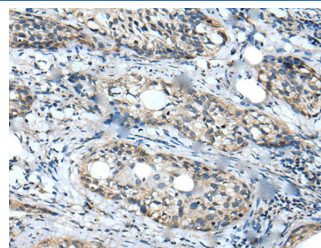
Data



Western blot analysis of Mouse kidney tissue lysate using WDFY2 Polyclonal Antibody at dilution of 1:350

Observed-MW:Refer to figures

Calculated-MW:45 kDa



Immunohistochemistry of paraffin-embedded Human cervical cancer tissue using WDFY2 Polyclonal Antibody at dilution of 1:40(×200)

Preparation & Storage

Storage	Store at -20°C Valid for 12 months. Avoid freeze / thaw cycles.
Shipping	The product is shipped with ice pack, upon receipt, store it immediately at the temperature recommended.

Background

WD repeat and FYVE domain-containing protein 2 (WDFY2), also known as WDF2 and ZFYVE22, is a 400 amino acid protein that localizes to a set of small endosomes that are found within 100 nm from the plasma membrane. Highly conserved between species, WDFY2 consists of one FYVE-type zinc finger and seven WD repeats. The FYVE domain is a cysteine-rich domain of about 70 amino acids. Its primary role is to target signal-transducing proteins to cell membranes through binding to the membrane lipid phosphatidylinositol-3-phosphate with high specificity. WD-repeats are generally found in clusters of seven. They have no intrinsic catalytic activity, but they serve as a platform for protein-protein interactions. WDFY2 is suspected to play a critical role in the endocytic pathway.

For Research Use Only