

Recombinant Mouse CD6 Protein(His Tag)

Catalog Number: PDMM100114

Note: Centrifuge before opening to ensure complete recovery of vial contents.

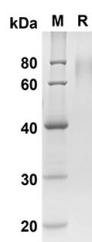
Description

Species	Mouse
Source	Mammalian-derived Mouse Cd6 protein Gly17-Thr398,with an C-terminal His
Mol_Mass	41.9 kDa
Accession	Q61003
Bio-activity	Not validated for activity

Properties

Purity	> 90% as determined by reducing SDS-PAGE.
Endotoxin	< 1.0 EU/mg of the protein as determined by the LAL method
Storage	Generally, lyophilized proteins are stable for up to 12 months when stored at -20 to -80 °C. Reconstituted protein solution can be stored at 4-8°C for 2-7 days. Aliquots of reconstituted samples are stable at < -20°C for 3 months.
Shipping	This product is provided as lyophilized powder which is shipped with ice packs.
Formulation	Lyophilized from a 0.2 µm filtered solution in PBS with 5% Trehalose and 5% Mannitol.
Reconstitution	It is recommended that sterile water be added to the vial to prepare a stock solution of 0.5 mg/mL. Concentration is measured by UV-Vis.

Data



SDS-PAGE analysis of Mouse CD6 proteins, 2 µg/lane of Recombinant Mouse CD6 proteins was resolved with SDS-PAGE under reducing conditions, showing bands at 41.9 KD

Background

For Research Use Only

Recombinant Mouse CD6 Protein(His Tag)

Catalog Number: PDMM100114



T-cell differentiation antigen CD6, also known as TP12 and CD6, is a single-pass type I membrane protein which contains three SRCR domains. CD6 / TP12 is a cell surface glycoprotein expressed primarily on T cells, it may function as a costimulatory molecule and may play a role in autoreactive immune responses. CD6 / TP12 is expressed by thymocytes, mature T-cells, a subset of B-cells known as B-1 cells, and by some cells in the brain. CD6 ligand termed CD166 (previously known as activated leukocyte cell adhesion molecule, ALCAM) has been identified and shown to be expressed on activated T cells, B cells, thymic epithelium, keratinocytes, and in rheumatoid arthritis synovial tissue. CD6 / TP12 binds to activated leukocyte cell adhesion molecule (CD166), and is considered as a costimulatory molecule involved in lymphocyte activation and thymocyte development. CD6 / TP12 partially associates with the TCR / CD3 complex and colocalizes with it at the center of the mature immunological synapse (IS) on T lymphocytes. During thymic development CD6-dependent signals may contribute both to thymocyte survival, and to the overall functional avidity of selection in both man and mouse.

For Research Use Only

A Reliable Research Partner in Life Science and Medicine
Tel: 400-999-2100

Email: techsupport@elabscience.cn

Web: www.elabscience.cn

Rev. V1.5