

## TMEM27 Polyclonal Antibody

**catalog number: E-AB-90462**

**Note:** Centrifuge before opening to ensure complete recovery of vial contents.

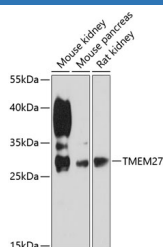
### Description

<b>Reactivity</b>	Mouse;Rat
<b>Immunogen</b>	Recombinant fusion protein of human TMEM27
<b>Host</b>	Rabbit
<b>Isotype</b>	IgG
<b>Purification</b>	Affinity purification
<b>Buffer</b>	Phosphate buffered solution, pH 7.4, containing 0.05% stabilizer and 50% glycerol.

### Applications

<b>WB</b>	1:500-1:2000
-----------	--------------

### Data



Western blot analysis of extracts of various cell lines using TMEM27 Polyclonal Antibody at 1:3000 dilution.

**Observed-MV:29 kDa**

**Calculated-MV:25 kDa**

### Preparation & Storage

<b>Storage</b>	Store at -20°C Valid for 12 months. Avoid freeze / thaw cycles.
<b>Shipping</b>	The product is shipped with ice pack, upon receipt, store it immediately at the temperature recommended.

### Background

This gene encodes a type 1 transmembrane protein that is important for trafficking amino acid transporters to the apical brush border of proximal tubules. The encoded protein binds to amino acid transporters and regulates their expression on the plasma membrane. It also plays a role in controlling insulin exocytosis by regulating formation of the SNARE (soluble N-ethylmaleimide-sensitive-factor attachment protein receptor) complex in pancreatic beta cells. The extracellular domain of the encoded protein may be cleaved and shed from the plasma membrane specifically in pancreatic beta cells.

### For Research Use Only