

CTAGE1 Polyclonal Antibody

catalog number: **E-AB-90617**

Note: Centrifuge before opening to ensure complete recovery of vial contents.

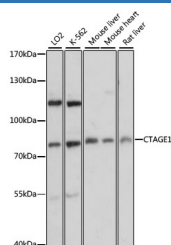
Description

Reactivity	Human;Mouse;Rat
Immunogen	Recombinant fusion protein of human CTAGE1
Host	Rabbit
Isotype	IgG
Purification	Affinity purification
Buffer	Phosphate buffered solution, pH 7.4, containing 0.05% stabilizer and 50% glycerol.

Applications

WB	1:1000-1:2000
-----------	---------------

Data



Western blot analysis of extracts of various cell lines using CTAGE1 Polyclonal Antibody at 1:3000 dilution.

Observed-MV:85 kDa

Calculated-MV:8 kDa/85 kDa

Preparation & Storage

Storage	Store at -20°C Valid for 12 months. Avoid freeze / thaw cycles.
Shipping	The product is shipped with ice pack,upon receipt,store it immediately at the temperature recommended.

Background

Predicted to be involved in endoplasmic reticulum to Golgi vesicle-mediated transport; protein secretion; and vesicle cargo loading. Predicted to be integral component of membrane. Predicted to be active in endoplasmic reticulum exit site and endoplasmic reticulum membrane.

For Research Use Only