

Purified Anti-Mouse Ly6C Antibody[Monts 1]

catalog number: E-AB-F1121A

Note: Centrifuge before opening to ensure complete recovery of vial contents.

Description

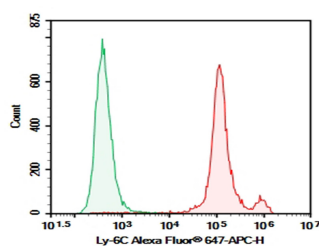
| | |
|---------------------|--|
| Reactivity | Mouse |
| Immunogen | Recombinant Mouse Ly-6C protein |
| Host | Rat |
| Isotype | Rat IgG2a, κ |
| Clone | Monts 1 |
| Purification | >98%, Protein A/G purified |
| Conjugation | Unconjugated |
| buffer | PBS, pH 7.2. Contains 0.05% proclin 300. |

Applications

Recommended Dilution

| | |
|------------|---|
| FCM | 2 $\mu\text{g/mL}$ (1×10^5 - 5×10^5 cells) |
|------------|---|

Data



C57BL/6 Mouse bone marrow cells were stained with 0.2 μg Purified Anti-Mouse Ly6C Antibody[Monts 1](Right) and 0.2 μg Rat IgG2a, κ Isotype Control(Left), followed by Alexa Fluor[®] 647-conjugated Goat Anti-Rat IgG Secondary Antibody.

Preparation & Storage

| | |
|-----------------|--|
| Storage | Store at 4°C valid for 12 months or -20°C valid for long term storage, avoid freeze / thaw cycles. |
| Shipping | Ice bag |

Background

Most hematopoietic cells express one or more members of Ly-6 family. The expression of Ly-6 varies with development stage and activation. Ly-6C is a 14-17 kD GPI-linked surface protein expressed on mouse monocyte/macrophage cells, endothelial cells, neutrophils, and some T cell subsets. Ly-6C is reported to be an indicator of memory CD8⁺ T cells.

For Research Use Only