

## FITC Anti-Human CD44 Antibody[P2A1]

**Catalog Number:** E-AB-F1038C

**Note:** Centrifuge before opening to ensure complete recovery of vial contents.

### Description

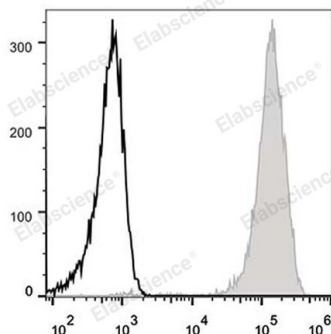
<b>Reactivity</b>	Human
<b>Host</b>	Mouse
<b>Isotype</b>	Mouse IgG2a, κ
<b>Clone No.</b>	P2A1
<b>Isotype Control</b>	FITC Mouse IgG2a, κ Isotype Control[C1.18.4] [Product E-AB-F09802C]
<b>Conjugation</b>	FITC
<b>Conjugation Information</b>	FITC is designed to be excited by the Blue laser (488 nm) and detected using an optical filter centered near 530 nm (e.g., a 525/40 nm bandpass filter).
<b>Storage Buffer</b>	Phosphate buffered solution, pH 7.2, containing 0.09% stabilizer and 1% protein protectant.

### Applications

### Recommended usage

<b>FCM</b>	Each lot of this antibody is quality control tested by flow cytometric analysis. <b>The amount of the reagent is suggested to be used 5 μL of antibody per test (million cells in 100 μL staining volume or per 100 μL of whole blood).</b> Please check your vial before the experiment. Since applications vary, the appropriate dilutions must be determined for individual use.
------------	---

### Data



Human peripheral blood lymphocytes are stained with FITC Anti-Human CD44 Antibody (filled gray histogram). Unstained lymphocytes (empty black histogram) are used as control.

### Preparation & Storage

<b>Storage</b>	Keep as concentrated solution. This product can be stored at 2-8°C for 12 months. Please protected from prolonged exposure to light and do not freeze.
<b>Shipping</b>	Ice bag

### Antigen Information

<b>Alternate Names</b>	MDU2MDU3MIC4;CD44;CD44 antigen;CDw44;Epican;LHR;PGP-1;PGP-I;Phagocytic glycoprotein 1;Phagocytic glycoprotein I
<b>Uniprot ID</b>	P16070

### For Research Use Only

**Gene ID**

960

**Background**

CD44 is a 80-95 kD glycoprotein also known as Hermes, Pgp1, H-CAM, or HUTCH. It is expressed on all leukocytes, endothelial cells, hepatocytes, and mesenchymal cells. As B and T cells become activated or progress to the memory stage, CD44 expression increases from a low or mid level of intensity to high expression levels. Thus, CD44 has been reported to be a valuable marker for memory cell subsets. CD44 is an adhesion molecule involved in leukocyte attachment to and rolling on endothelial cells, homing to peripheral lymphoid organs and to the sites of inflammation, and leukocyte aggregation.

**For Research Use Only**