

## Recombinant CD169 Monoclonal Antibody

catalog number: **AN301466L**

**Note:** Centrifuge before opening to ensure complete recovery of vial contents.

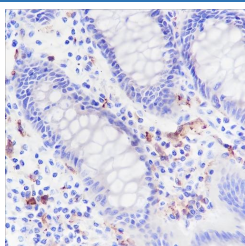
### Description

<b>Reactivity</b>	Human;
<b>Immunogen</b>	Recombinant human CD169 fragment
<b>Host</b>	Rabbit
<b>Isotype</b>	IgG, $\kappa$
<b>Clone</b>	A161
<b>Purification</b>	Protein A purified
<b>Buffer</b>	PBS, 50% glycerol, 0.05% Proclin 300, 0.05% protein protectant.

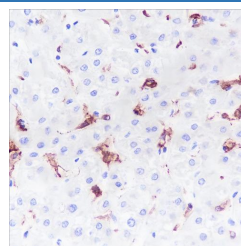
### Applications Recommended Dilution

<b>IHC</b>	1:200-1:1000
<b>IF</b>	1:50
<b>FCM</b>	1:50-1:100

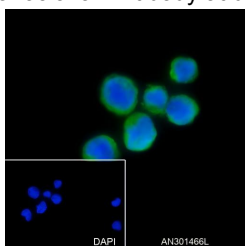
### Data



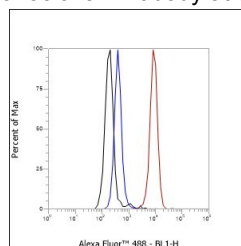
Immunohistochemistry of paraffin-embedded Human colon using CD169 Monoclonal Antibody at dilution of 1:1000.



Immunohistochemistry of paraffin-embedded Human liver using CD169 Monoclonal Antibody at dilution of 1:1000.



Immunofluorescent analysis of (4% Paraformaldehyde) fixed THP-1 cells using anti-CD169 Monoclonal Antibody at dilution of 1:50.



Flow cytometric analysis of human CD169 expression on THP-1 cells. Cells were stained with purified anti-Human CD169, then a Alexa Fluor 488-conjugated second step antibody. The histogram were derived from events with the forward and side light-scatter characteristics of intact cells.

### Preparation & Storage

<b>Storage</b>	Store at -20°C Valid for 12 months. Avoid freeze / thaw cycles.
<b>Shipping</b>	Ice bag

### Background

Acts as an endocytic receptor mediating clathrin dependent endocytosis. Macrophage-restricted adhesion molecule that mediates sialic-acid dependent binding to lymphocytes, including granulocytes, monocytes, natural killer cells, B-cells and CD8 T-cells. Preferentially binds to alpha-2,3-linked sialic acid (By similarity). Binds to SPN/CD43 on T-cells (By similarity). May play a role in hemopoiesis.

### For Research Use Only