

Recombinant KCTD9 Monoclonal Antibody

catalog number: **AN300760L**

Note: Centrifuge before opening to ensure complete recovery of vial contents.

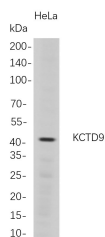
Description

Reactivity	Human
Immunogen	Recombinant Human KCTD9 protein
Host	Rabbit
Isotype	IgG, κ
Clone	B703
Purification	Protein A
Buffer	PBS, 50% glycerol, 0.05% Proclin 300, 0.05% protein protectant.

Applications Recommended Dilution

WB	1:1000-5000
ICC/IF	1:100-300

Data



Western Blot with Recombinant KCTD9 Monoclonal Antibody at dilution of 1:1000 dilution. Lane A: HeLa whole cell lysate.

Observed-MW:43 kDa

Preparation & Storage

Storage	Store at -20°C Valid for 12 months. Avoid freeze / thaw cycles.
Shipping	Ice bag

Background

Enables cullin family protein binding activity and identical protein binding activity. Predicted to be involved in intracellular signal transduction; protein homooligomerization; and protein ubiquitination.

For Research Use Only