

Recombinant MCM2 Monoclonal Antibody

catalog number: E-AB-81581

Note: Centrifuge before opening to ensure complete recovery of vial contents.

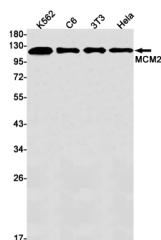
Description

Reactivity	Human;Mouse;Rat
Immunogen	A synthetic peptide of human MCM2
Host	Rabbit
Isotype	IgG
Clone	R08-9H4
Purification	Affinity Purified
Buffer	50mM Tris-Glycine(pH 7.4), 0.15M NaCl, 40% Glycerol, 0.05% stabilizer and 0.05% protective protein.

Applications

Applications	Recommended Dilution
WB	1:500-1:1000
IF	1:50-1:200

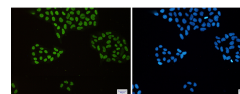
Data



Western blot detection of MCM2 in K562, C6, 3T3, HeLa cell lysates using MCM2 Rabbit mAb (1:1000 diluted). Predicted band size: 102 kDa. Observed band size: 125 kDa.

Observed-MW: 125 kDa

Calculated-MW: 102 kDa



Immunofluorescence of MCM2 (green) in HeLa cells using MCM2 Rabbit mAb at dilution 1:50, and DAPI (blue)

Preparation & Storage

Storage	Store at -20°C Valid for 12 months. Avoid freeze / thaw cycles.
Shipping	The product is shipped with ice pack, upon receipt, store it immediately at the temperature recommended.

Background

The protein encoded by this gene is one of the highly conserved mini-chromosome maintenance proteins (MCM) that are involved in the initiation of eukaryotic genome replication. The hexameric protein complex formed by MCM proteins is a key component of the pre-replication complex (pre-RC) and may be involved in the formation of replication forks and in the recruitment of other DNA replication related proteins. This protein forms a complex with mCM4, 6, and 7, and has been shown to regulate the helicase activity of the complex. This protein is phosphorylated, and thus regulated by, protein kinases CDC2 and CDC7.

For Research Use Only